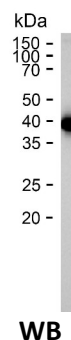
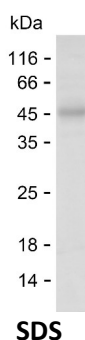


Summary

| | |
|------------------------------|--|
| Name | PCDGE_HUMAN |
| Purity | Greater than 85% as determined by reducing SDS-PAGE |
| Endotoxin level | Please contact with the lab for this information |
| Tag | C-hFc & C-His |
| Accession # | Q9Y5G2 |
| Host | HEK293 |
| Species | Human |
| Molecular Mass | 41 kDa |
| Buffer | Phosphate buffered saline |
| Shipping | The product is shipped on dry ice/polar packs. Upon receipt, store it immediately at the temperature listed below. |
| Stability&Storage | Store at $\leq -70^{\circ}\text{C}$, stable for 6 months after receipt. Store at $\leq -70^{\circ}\text{C}$, stable for 3 months under sterile conditions after opening. Please minimize freeze-thaw cycles. |
| Sequence | PLFKQTKINL KIGESTKPGT TFPLDPALDS DVGPNLQRY HLNDNEYFDL AEKQTPDGRK YPELILKHSI DREEHSLHQL VLTAVDGGDP PQSGTTQIRI KVTDANDNPP VFSQDVYRVT |

image



Background

Alternative Names Protocadherin gamma-B2 (PCDH-gamma-B2)

Note

For Research Use Only , Not for Diagnostic Use