

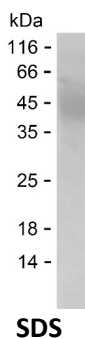
**Product Name: Recombinant Human PKDREJ Protein**  
**Catalog #: PHH5344**



## Summary

<b>Name</b>	PKDRE_HUMAN
<b>Purity</b>	Greater than 85% as determined by reducing SDS-PAGE
<b>Endotoxin level</b>	Please contact with the lab for this information
<b>Tag</b>	C-His
<b>Accession #</b>	Q9NTG1
<b>Host</b>	HEK293
<b>Species</b>	Human
<b>Molecular Mass</b>	34 kDa
<b>Buffer</b>	Phosphate buffered saline
<b>Shipping</b>	The product is shipped on dry ice/polar packs. Upon receipt, store it immediately at the temperature listed below.
<b>Stability&amp;Storage</b>	Store at $\leq -70^{\circ}\text{C}$ , stable for 6 months after receipt. Store at $\leq -70^{\circ}\text{C}$ , stable for 3 months under sterile conditions after opening. Please minimize freeze-thaw cycles.
<b>Sequence</b>	RVSPRSAAPG PRPQQGFVAR TECPTDGPARG VMLQAVNSSS HRAVESSVSC QINACVIQRV RINTDQKGAP VRLSMQAEAT INASVQLDCP AARAIAQYWQ VFSVPAVGQA PDWTQPLDLP QLEIRNSPLF IHIPNNSLQW GVVVFNFVTS ITTGNPKMPE VKDSDAVYVW IVRSSLQAVM LGDANITANF TEQLILDGST SSDPDADSPL QGLQFFWYCT TDPRNYGGDR IILGSKEVCH PEQANLKWPW ASGPVLTLLP ETLKGDHVFY FRMVIRKDSR TAFSDKRVHV

## image



SDS



WB

## Background

<b>Alternative Names</b>	Polycystic kidney disease and receptor for egg jelly-related protein (PKD and REJ homolog)
--------------------------	--

**Product Name: Recombinant Human PKDREJ Protein**  
**Catalog #: PHH5344**

---



**Note**

For Research Use Only , Not for Diagnostic Use