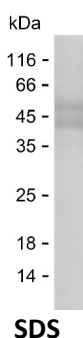


Summary

Name	PKHL1_HUMAN
Purity	Greater than 85% as determined by reducing SDS-PAGE
Endotoxin level	Please contact with the lab for this information
Tag	C-hFc & C-His
Accession #	Q86W11
Host	HEK293
Species	Human
Molecular Mass	38 kDa
Buffer	Phosphate buffered saline
Shipping	The product is shipped on dry ice/polar packs. Upon receipt, store it immediately at the temperature listed below.
Stability&Storage	Store at $\leq -70^{\circ}\text{C}$, stable for 6 months after receipt. Store at $\leq -70^{\circ}\text{C}$, stable for 3 months under sterile conditions after opening. Please minimize freeze-thaw cycles.
Sequence	TLDITEQTKG KPNLETFTLN WDGIASKPLT LWSSEAEFQG AVEEMVSTKC PPQIANFEEG FVVKYFRDYE TDFNLEHINR

image



Background

Alternative Names	Fibrocystin-L (Polycystic kidney and hepatic disease 1-like protein 1) (PKHD1-like protein 1)
--------------------------	---

Note

For Research Use Only , Not for Diagnostic Use