

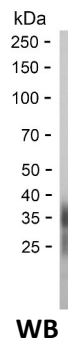
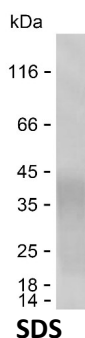
Product Name: Recombinant Human LIF Protein
Catalog #: PHH4416



Summary

Name	LIF_HUMAN
Purity	Greater than 85% as determined by reducing SDS-PAGE
Endotoxin level	Please contact with the lab for this information
Tag	C-His
Accession #	P15018
Host	HEK293
Species	Human
Molecular Mass	20 kDa
Buffer	Phosphate buffered saline
Shipping	The product is shipped on dry ice/polar packs. Upon receipt, store it immediately at the temperature listed below.
Stability&Storage	Store at $\leq -70^{\circ}\text{C}$, stable for 12 months after receipt. Store at $\leq -70^{\circ}\text{C}$, stable for 3 months under sterile conditions after opening. Please minimize freeze-thaw cycles.
Sequence	SPLPITPVNA TCAIRHPCHN NLMNQIRSQL AQLNGSANAL FILYYTAQGE PFPNNLDKLC GPNVTDFPPF HANGTEKAKL VELYRIVVYL GTSLGNITRD QKILNPSALS LHSKLNATAD ILRGLLSNVL CRLCSKYHVG HVDVTYGPD SGKDVFQKKK LGCQLLGKYK QIIAVLAQAF

image



Background

Alternative Names Leukemia inhibitory factor (LIF) (Differentiation-stimulating factor) (D factor) (Melanoma-derived LPL inhibitor) (MLPLI) (Emfilermin)

Note

For Research Use Only , Not for Diagnostic Use

Product Name: Recombinant Human LIF Protein
Catalog #: PHH4416

