

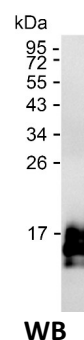
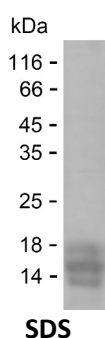
Product Name: Recombinant Human PLB1 Protein
Catalog #: PHH3967



Summary

Name	PLB1_HUMAN
Purity	Greater than 85% as determined by reducing SDS-PAGE
Endotoxin level	Please contact with the lab for this information
Tag	C-His
Accession #	Q6P1J6
Host	HEK293
Species	Human
Molecular Mass	11 kDa
Buffer	Phosphate buffered saline
Shipping	The product is shipped on dry ice/polar packs. Upon receipt, store it immediately at the temperature listed below.
Stability&Storage	Store at $\leq -70^{\circ}\text{C}$, stable for 6 months after receipt. Store at $\leq -70^{\circ}\text{C}$, stable for 3 months under sterile conditions after opening. Please minimize freeze-thaw cycles.
Sequence	EPLSVKHGRP MKCPSQESPY LFSYRNSNYL TRLQKPQDKL EVREGAEIRC PDKDPSDTPV TSVHRLKPAD INVIGALGDS

image



Background

Alternative Names Phospholipase B1, membrane-associated (Phospholipase B) (hPLB) (Lysophospholipase) (EC 3.1.1.5) (Phospholipase A2) (EC 3.1.1.4) (Phospholipase B/lipase) (PLB/LIP) (Triacylglycerol lipase) (EC 3.1.1.3)

Note

For Research Use Only , Not for Diagnostic Use