

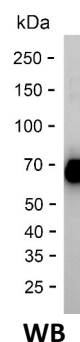
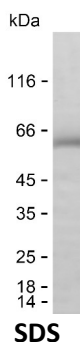
Product Name: Recombinant Human KIRREL2 Protein
Catalog #: PHH3913



Summary

Name	KIRR2_HUMAN
Purity	Greater than 85% as determined by reducing SDS-PAGE
Endotoxin level	Please contact with the lab for this information
Tag	N-MBP & C-His
Accession #	Q6UWL6
Host	HEK293
Species	Human
Molecular Mass	59 kDa
Buffer	Phosphate buffered saline
Shipping	The product is shipped on dry ice/polar packs. Upon receipt, store it immediately at the temperature listed below.
Stability&Storage	Store at $\leq -70^{\circ}\text{C}$, stable for 6 months after receipt. Store at $\leq -70^{\circ}\text{C}$, stable for 3 months under sterile conditions after opening. Please minimize freeze-thaw cycles.
Sequence	GWSRYWISGN AANGQHDHLI RPVELEDEAS YECQATQAGL RSRPAQLHVL VPPEAPQVLG GPSVSLVAGV PANLTCRSRG DARPTPELLW FRDGVLLDGA TFHQTLKEG TPGSVESTLT LTPFSHDDGA TFVCRARSQA LPTGRDTAIT

image



Background

Alternative Names	Kin of IRRE-like protein 2 (Kin of irregular chiasm-like protein 2) (Nephrin-like protein 3)
--------------------------	--

Note

For Research Use Only , Not for Diagnostic Use