

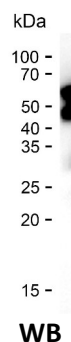
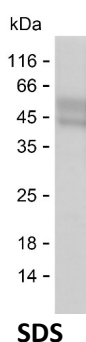
**Product Name: Recombinant Human PDPN Protein**  
**Catalog #: PHH3895**



## Summary

<b>Name</b>	PDPN_HUMAN
<b>Purity</b>	Greater than 85% as determined by reducing SDS-PAGE
<b>Endotoxin level</b>	Please contact with the lab for this information
<b>Tag</b>	C-hFc & C-His
<b>Accession #</b>	Q86YL7
<b>Host</b>	HEK293
<b>Species</b>	Human
<b>Molecular Mass</b>	37 kDa
<b>Buffer</b>	Phosphate buffered saline
<b>Shipping</b>	The product is shipped on dry ice/polar packs. Upon receipt, store it immediately at the temperature listed below.
<b>Stability&amp;Storage</b>	Store at $\leq -70^{\circ}\text{C}$ , stable for 12 months after receipt. Store at $\leq -70^{\circ}\text{C}$ , stable for 3 months under sterile conditions after opening. Please minimize freeze-thaw cycles.
<b>Sequence</b>	VTPGTSEDRY KSGLTTLVAT SVNSVTGIRI EDLPTSESTV HAQEQSPSAT ASNVATSHST EKVDGDTQTT

## image



## Background

**Alternative Names** Podoplanin (Aggrus) (Glycoprotein 36) (Gp36) (PA2.26 antigen) (T1-alpha) (T1A) [Cleaved into: 29kDa cytosolic podoplanin intracellular domain (PICD)]

## Note

For Research Use Only , Not for Diagnostic Use