

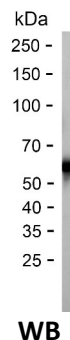
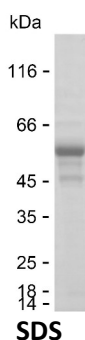
Product Name: Recombinant Human PLCB1 Protein
Catalog #: PHH3746



Summary

Name	PLCB1_HUMAN
Purity	Greater than 85% as determined by reducing SDS-PAGE
Endotoxin level	Please contact with the lab for this information
Tag	N-MBP & C-His
Accession #	Q9NQ66
Host	HEK293
Species	Human
Molecular Mass	57 kDa
Buffer	Phosphate buffered saline
Shipping	The product is shipped on dry ice/polar packs. Upon receipt, store it immediately at the temperature listed below.
Stability&Storage	Store at $\leq -70^{\circ}\text{C}$, stable for 6 months after receipt. Store at $\leq -70^{\circ}\text{C}$, stable for 3 months under sterile conditions after opening. Please minimize freeze-thaw cycles.
Sequence	MEEEKTEMIR SYIQEVVQYI KRLEEAQSKR QEKLVEKHKE IRQQILDEKP KLQVELEQEY QDKFKRLPLE ILEFVQEAMK GKISEDNSHG SAPLSLSSDP GKVNHKTPSS EELGGDIPGK

image



Background

Alternative Names	1-phosphatidylinositol 4,5-bisphosphate phosphodiesterase beta-1 (EC 3.1.4.11) (PLC-154) (Phosphoinositide phospholipase C-beta-1) (Phospholipase C-I) (PLC-I) (Phospholipase C-beta-1) (PLC-beta-1)
--------------------------	------------------------------------------------------------------------------------------------------------------------------------------------------------------------------------------------------

Note

For Research Use Only , Not for Diagnostic Use

Product Name: Recombinant Human PLCB1 Protein
Catalog #: PHH3746

