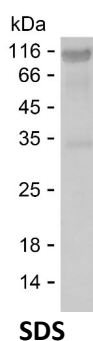


Summary

Name	APLP2_HUMAN
Purity	Greater than 85% as determined by reducing SDS-PAGE
Endotoxin level	Please contact with the lab for this information
Tag	C-hFc & C-His
Accession #	Q06481
Host	HEK293
Species	Human
Molecular Mass	69 kDa
Buffer	Phosphate buffered saline
Shipping	The product is shipped on dry ice/polar packs. Upon receipt, store it immediately at the temperature listed below.
Stability&Storage	Store at $\leq -70^{\circ}\text{C}$, stable for 12 months after receipt. Store at $\leq -70^{\circ}\text{C}$, stable for 3 months under sterile conditions after opening. Please minimize freeze-thaw cycles.
Sequence	EEAVDEDED EEEGEEVVED RDYYYDTFKG DDYNEENPTE PGSDGTMSDK EITHDVKAVC SQEAMTGPCR AVMPRWYFDL SKGKCVRFYI GGCGGNRNNF ESEDYCMAYC KAMIPPTPLP TNDVDVYFET SADDNEHARF QKAKEQLEIR HRNRMDRVKK EWEEAELQAK NLPKAERQTL IQHFQAMVKA LEKEAASEKQ QLVETHLARV EAMLNDRRRM ALENYLAALQ SDPPRPHRIL QALRRYVRAE NKDRLHTIRH YQHVLAVDPE KAAQMKSQVM THLHVIEERR NQSLSLLYKV PYVAQEIQEE IDELLQEQRA DMDQFTASIS ETPVDVRVSS

image



Background

Alternative Names	Amyloid-like protein 2 (APLP-2) (APPH) (Amyloid protein homolog) (CDEI box-binding protein) (CDEBP)
--------------------------	---

Product Name: Recombinant Human APLP2 Protein
Catalog #: PHH3601



Note

For Research Use Only , Not for Diagnostic Use