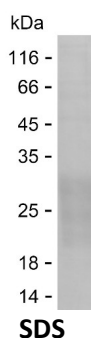


## Summary

<b>Name</b>	CLCA2_HUMAN
<b>Purity</b>	Greater than 85% as determined by reducing SDS-PAGE
<b>Endotoxin level</b>	Please contact with the lab for this information
<b>Tag</b>	C-His
<b>Accession #</b>	Q9UQC9
<b>Host</b>	HEK293
<b>Species</b>	Human
<b>Molecular Mass</b>	11 kDa
<b>Buffer</b>	Phosphate buffered saline
<b>Shipping</b>	The product is shipped on dry ice/polar packs. Upon receipt, store it immediately at the temperature listed below.
<b>Stability&amp;Storage</b>	Store at $\leq -70^{\circ}\text{C}$ , stable for 12 months after receipt. Store at $\leq -70^{\circ}\text{C}$ , stable for 3 months under sterile conditions after opening. Please minimize freeze-thaw cycles.
<b>Sequence</b>	DLEAVKVEEE LTLWTAPGE DFDQGQATSY EIRMSKSLQN IQDDFNNAIL VNTSKRNPQQ AGIREIFTFS PQISTNGPEH

## image



## Background

### Alternative Names

Calcium-activated chloride channel regulator 2 (EC 3.4.-.-) (Calcium-activated chloride channel family member 2) (hCLCA2) (Calcium-activated chloride channel protein 3) (CaCC-3) (hCaCC-3) [Cleaved into: Calcium-activated chloride channel regulator 2, 109 kDa form; Calcium-activated chloride channel regulator 2, 35 kDa form]

## Note

**Product Name: Recombinant Human CLCA2 Protein**  
**Catalog #: PHH3456**



---

For Research Use Only , Not for Diagnostic Use