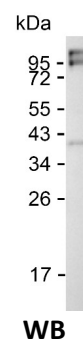
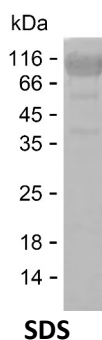


Summary

Name	CNDP1_HUMAN
Purity	Greater than 85% as determined by reducing SDS-PAGE
Endotoxin level	Please contact with the lab for this information
Tag	C-hFc & C-His
Accession #	Q96KN2
Host	HEK293
Species	Human
Molecular Mass	82 kDa
Buffer	Phosphate buffered saline
Shipping	The product is shipped on dry ice/polar packs. Upon receipt, store it immediately at the temperature listed below.
Stability&Storage	Store at $\leq -70^{\circ}\text{C}$, stable for 6 months after receipt. Store at $\leq -70^{\circ}\text{C}$, stable for 3 months under sterile conditions after opening. Please minimize freeze-thaw cycles.
Sequence	SPSPPPALLE KVFQYIDLHQ DEFVQTLKEW VAIESDSVQP VPRFRQELFR MMAVAADTLQ RLGARVASVD MGPQQLPDGQ SLPIPPVILA ELGSDPTKGT VCFYGHLDVQ PADRGDGWLT DPYVLTEVDG KLYGRGATDN KGPVLAWINA VSAFRALEQD LPVNIKFIE GMEEAGSVAL EELVEKEKDR FFSGVYIYI SDNLWISQRK PAITYGTRGN SYFMVEVKCR DQDFHSGTFG GILHEPMADL VALLGSLVDS SGHILVPGIY DEVVPLTEEE INTYKAIHLD LEEYRNSSRV EKFLFDTKEE ILMHLWRYPY LSIHGIEGAF DEPGTKVIP GRVIGKFSIR LVPHMNVSAV EKQVTRHLED VFSKRNSSNK MVVSMTLGLH PWIANIDDTQ YLAAKRAIRT VFGTEPDMIR DGSTIPIAKM FQEIVHKSVM LIPLGAVDDG EHSQNEKINR WNYIEGTKLF AAFLEMAQL H

image



Background

Product Name: Recombinant Human CNDP1 Protein
Catalog #: PHH3247



Alternative Names

Beta-Ala-His dipeptidase (EC 3.4.13.20) (CNDP dipeptidase 1) (Carnosine dipeptidase 1) (Glutamate carboxypeptidase-like protein 2) (Serum carnosinase)

Note

For Research Use Only , Not for Diagnostic Use