

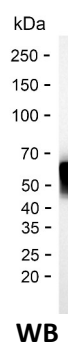
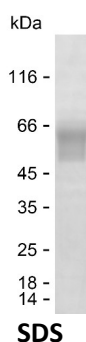
Product Name: Recombinant Human SLA Protein
Catalog #: PHH3166



Summary

Name	SLAP1_HUMAN
Purity	Greater than 85% as determined by reducing SDS-PAGE
Endotoxin level	Please contact with the lab for this information
Tag	N-MBP & C-His
Accession #	Q13239
Host	HEK293
Species	Human
Molecular Mass	52 kDa
Buffer	Phosphate buffered saline
Shipping	The product is shipped on dry ice/polar packs. Upon receipt, store it immediately at the temperature listed below.
Stability&Storage	Store at $\leq -70^{\circ}\text{C}$, stable for 6 months after receipt. Store at $\leq -70^{\circ}\text{C}$, stable for 3 months under sterile conditions after opening. Please minimize freeze-thaw cycles.
Sequence	AAPAVRASSS PVTLRQKTVD WRRVSRLQED PEGTENPLGV DESLFSYGLR ESIASYLSLT SEDNTSFDRK KKSISLMYGG

image



Background

Alternative Names Src-like-adaptor (Src-like-adaptor protein 1) (SLAP-1) (hSLAP)

Note

For Research Use Only , Not for Diagnostic Use