

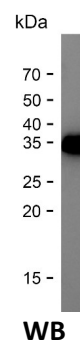
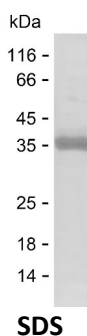
**Product Name: Recombinant Human IGFBP2 protein**  
**Catalog #: PHH2962**



## Summary

<b>Name</b>	IBP2_HUMAN
<b>Purity</b>	Greater than 85% as determined by reducing SDS-PAGE
<b>Endotoxin level</b>	Please contact with the lab for this information
<b>Tag</b>	C-His
<b>Accession #</b>	P18065
<b>Host</b>	HEK293
<b>Species</b>	Human
<b>Molecular Mass</b>	32 kDa
<b>Buffer</b>	Phosphate buffered saline
<b>Shipping</b>	The product is shipped on dry ice/polar packs. Upon receipt, store it immediately at the temperature listed below.
<b>Stability&amp;Storage</b>	Store at $\leq -70^{\circ}\text{C}$ , stable for 12 months after receipt. Store at $\leq -70^{\circ}\text{C}$ , stable for 3 months under sterile conditions after opening. Please minimize freeze-thaw cycles.
<b>Sequence</b>	AEVLFRCPPC TPERLAACGP PPVAPPAAVA AVAGGARMPC AELVREPGCG CCSVCARLEG EACGVYTPRC GQGLRCYPHP GSELPLQALV MEGGTCEKRR DAEYGASPEQ VADNGDDHSE GGLVENHVDS TMNMLGGGGS AGRKPLKSGM KELAVFREKV TEQHRQMGKG GKHHLGLEEP KKLRRPPPART PCQQELDQVL ERISTMRLPD ERGPLEHLYS LHIPNCDKHG LYNLQCKMS LNGQRGECWC VNPNTGKLIQ GAPTIRGDPE CHLFYNEQQE ARGVHTQRMQ

## image



## Background

<b>Alternative Names</b>	Insulin-like growth factor-binding protein 2 (IBP-2) (IGF-binding protein 2) (IGFBP-2)
--------------------------	--

**Product Name: Recombinant Human IGFBP2 protein**  
**Catalog #: PHH2962**

---



**Note**

For Research Use Only , Not for Diagnostic Use