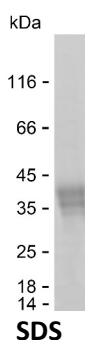


Summary

Name	EPCAM_HUMAN
Purity	Greater than 85% as determined by reducing SDS-PAGE
Endotoxin level	Please contact with the lab for this information
Tag	N-His
Accession #	P16422
Host	HEK293
Species	Human
Molecular Mass	29 kDa
Buffer	Phosphate buffered saline
Shipping	The product is shipped on dry ice/polar packs. Upon receipt, store it immediately at the temperature listed below.
Stability&Storage	Store at $\leq -70^{\circ}\text{C}$, stable for 6 months after receipt. Store at $\leq -70^{\circ}\text{C}$, stable for 3 months under sterile conditions after opening. Please minimize freeze-thaw cycles.
Sequence	NYKLAVNCFV NNNRQCQCTS VGAQNTVICS KLA AKCLVMK AEMNGSKLGR RAKPEGALQN NDGLYDPDCD ESGLFKAKQC NGTSMCWCVN TAGVRRTDKD TEITCSERVR TYWIIIELKH KAREKPYDSK SLRTALQKEI TTRYQLDPKF ITSILYENNV ITIDLQNSS QKTQNDVDIA DVAYYFEKDV KGESLFHSKK MDLTVNGEQL DLDPGQTLIY YVDEKAPEFS

image



Background

Alternative Names	Epithelial cell adhesion molecule (Ep-CAM) (Adenocarcinoma-associated antigen) (Cell surface glycoprotein Trop-1) (Epithelial cell surface antigen) (Epithelial glycoprotein) (EGP) (Epithelial glycoprotein 314) (EGP314) (hEGP314) (KS 1/4 antigen) (KSA) (Major gastrointestinal tumor-associated
--------------------------	--

Product Name: Recombinant Human EPCAM Protein
Catalog #: PHH2950



protein GA733-2) (Tumor-associated calcium signal transducer 1) (CD
antigen CD326)

Note

For Research Use Only , Not for Diagnostic Use