

Product Name: Recombinant Human NaPi2b (C-6His-Flag)
Catalog #: PHH2450

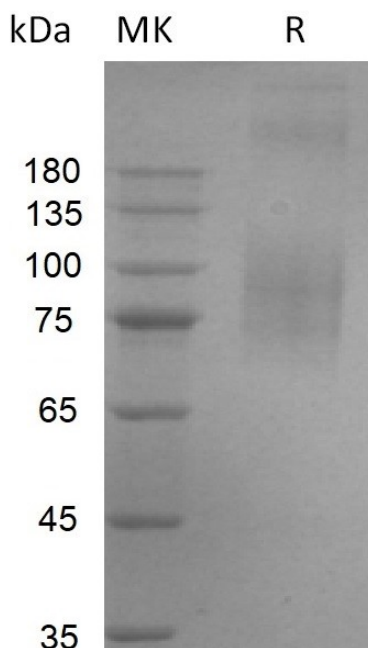


Summary

Name	NaPi2b
Purity	Greater than 95% as determined by reducing SDS-PAGE
Endotoxin level	<1 EU/μg as determined by LAL test.
Construction	Recombinant Human Sodium-dependent phosphate transport protein 2B is produced by our Mammalian expression system and the target gene encoding Met1-Leu689 is expressed with a 6His, flag tag at the C-terminus. The product is not recommended for cell based experiments.*The product is not recommended for cell based experiments.
Accession #	O95436-2
Host	Human cells
Species	Human
Predicted Molecular Mass	77.5 KDa
Formulation	Supplied as a 0.2 μm filtered solution of 50mM HEPES-Na, 150mM NaCl, 0.02% DDM, 0.004% CHS, 5% Glycerol, pH7.5.
Shipping	The product is shipped on dry ice/polar packs. Upon receipt, store it immediately at the temperature listed below.
Stability&Storage	Store at ≤-70°C, stable for 6 months after receipt. Store at ≤-70°C, stable for 3 months under sterile conditions after opening. Please minimize freeze-thaw cycles.
Reconstitution	

SDS-PAGE image

Product Name: Recombinant Human NaPi2b (C-6His-Flag)
Catalog #: PHH2450



Alternative Names

Sodium-dependent phosphate transport protein 2B; SLC34A2; Na(+)-dependent phosphate cotransporter 2B; NaPi-2b; Solute carrier family 34 member 2; SLC34A2

Background

NaPi2b, also named SLC34A2, is a sodium-dependent phosphate transporter that belongs to the SLC34 family of transporters which is mainly responsible for phosphate homeostasis in humans. Although NaPi2b is widely expressed in normal tissues, its overexpression has been demonstrated in ovarian, lung, and other cancers. NaPi2b may comprise of never been considered, established, continuous, and discontinuous epitopes and therefore represents a new family of potential cell surface markers and targets for the immunotherapy of several types of cancers.

Note

For Research Use Only , Not for Diagnostic Use.