

Product Name: Recombinant Human EDIL3 (C-Fc)
Catalog #: PHH2439

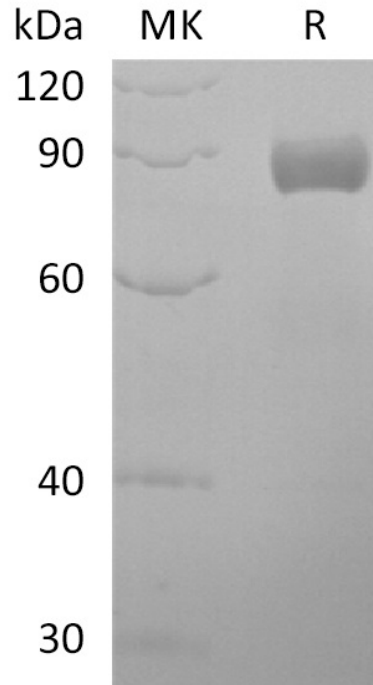


Summary

Name	EDIL3/EGF-like repeats and discoidin I-like domains 3/Del-1/Integrin-binding protein DEL1
Purity	Greater than 95% as determined by reducing SDS-PAGE
Endotoxin level	Please contact with the lab for this information
Construction	Recombinant Human EGF-Like Repeat and Discoidin I-Like Domain-Containing Protein 3 is produced by our Mammalian expression system and the target gene encoding Asp24-Glu480 is expressed with a human IgG1 Fc tag at the C-terminus.
Accession #	O43854-1
Host	Human Cells
Species	Human
Predicted Molecular Mass	78.3 kDa
Formulation	Lyophilized protein should be stored at $\leq -20^{\circ}\text{C}$, stable for one year after receipt. Reconstituted protein solution can be stored at $2-8^{\circ}\text{C}$ for 2-7 days. Aliquots of reconstituted samples are stable at $\leq -20^{\circ}\text{C}$ for 3 months.
Shipping	The product is shipped on dry ice/polar packs. Upon receipt, store it immediately at the temperature listed below.
Stability&Storage	Lyophilized protein should be stored at $\leq -20^{\circ}\text{C}$, stable for one year after receipt. Reconstituted protein solution can be stored at $2-8^{\circ}\text{C}$ for 2-7 days. Aliquots of reconstituted samples are stable at $\leq -20^{\circ}\text{C}$ for 3 months.
Reconstitution	Always centrifuge tubes before opening. Do not mix by vortex or pipetting. It is not recommended to reconstitute to a concentration less than $100\mu\text{g/ml}$. Dissolve the lyophilized protein in distilled water. Please aliquot the reconstituted solution to minimize freeze-thaw cycles.

SDS-PAGE image

Product Name: Recombinant Human EDIL3 (C-Fc)
Catalog #: PHH2439



Alternative Names

Background

Note

For Research Use Only , Not for Diagnostic Use.