

Product Name: Recombinant Human PSMA (N-Fc)
Catalog #: PHH2436

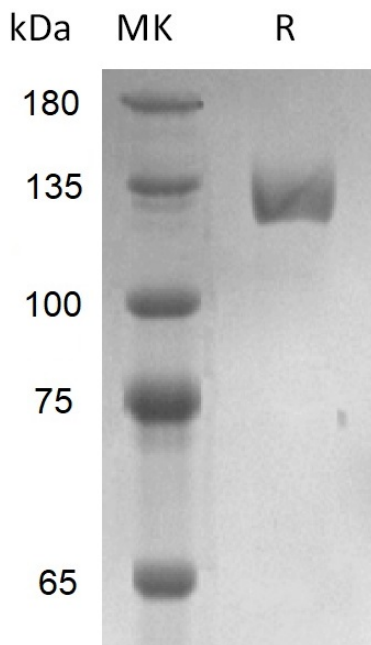


Summary

Name	PSMA/FOLH1/GCP2/FGCP/GCP/II/mGCP/NAALADase I
Purity	Greater than 95% as determined by reducing SDS-PAGE
Endotoxin level	Please contact with the lab for this information
Construction	Recombinant Human Glutamate carboxypeptidase 2 is produced by our Mammalian expression system and the target gene encoding Lys44-Ala750 is expressed with a human IgG1 Fc tag at the N-terminus.
Accession #	AAC83972.1
Host	Human Cells
Species	Human
Predicted Molecular Mass	105.3 kDa
Formulation	Lyophilized from a 0.2 µm filtered solution of 20mM MES, 150mM NaCl, pH5.5. Reconstituted protein solution can be stored at 2-8°C for 2-7 days. Aliquots of reconstituted samples are stable at ≤ -20°C for 3 months.
Shipping	The product is shipped on dry ice/polar packs. Upon receipt, store it immediately at the temperature listed below.
Stability&Storage	Lyophilized protein should be stored at ≤ -20°C, stable for one year after receipt. Reconstituted protein solution can be stored at 2-8°C for 2-7 days. Aliquots of reconstituted samples are stable at ≤ -20°C for 3 months.
Reconstitution	Always centrifuge tubes before opening. Do not mix by vortex or pipetting. It is not recommended to reconstitute to a concentration less than 100µg/ml. Dissolve the lyophilized protein in distilled water. Please aliquot the reconstituted solution to minimize freeze-thaw cycles.

SDS-PAGE image

Product Name: Recombinant Human PSMA (N-Fc)
Catalog #: PHH2436



Alternative Names

Background

Note

For Research Use Only , Not for Diagnostic Use.