

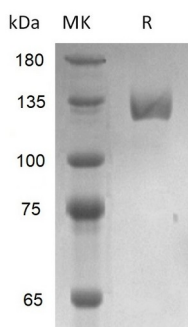
**Product Name: Recombinant Human PSMA (N-Fc)**  
**Catalog #: PHH2436**



## Summary

<b>Name</b>	PSMA/FOLH1/GCP2/FGCP/GCP/II/mGCP/NAALADase I
<b>Purity</b>	Greater than 95% as determined by reducing SDS-PAGE
<b>Endotoxin level</b>	Please contact with the lab for this information
<b>Construction</b>	Recombinant Human Glutamate carboxypeptidase 2 is produced by our Mammalian expression system and the target gene encoding Lys44-Ala750 is expressed with a human IgG1 Fc tag at the N-terminus.
<b>Accession #</b>	AAC83972.1
<b>Host</b>	Human Cells
<b>Species</b>	Human
<b>Predicted Molecular Mass</b>	105.3 kDa
<b>Formulation</b>	Lyophilized protein should be stored at $\leq -20^{\circ}\text{C}$ , stable for one year after receipt. Reconstituted protein solution can be stored at $2-8^{\circ}\text{C}$ for 2-7 days. Aliquots of reconstituted samples are stable at $\leq -20^{\circ}\text{C}$ for 3 months.
<b>Shipping</b>	The product is shipped on dry ice/polar packs. Upon receipt, store it immediately at the temperature listed below.
<b>Stability&amp;Storage</b>	0.0
<b>Reconstitution</b>	

## SDS-PAGE image



## Background

<b>Alternative Names</b>	0.0
<b>Background</b>	0.0

**Product Name: Recombinant Human PSMA (N-Fc)**  
**Catalog #: PHH2436**

---



**Note**

For Research Use Only , Not for Diagnostic Use.