

**Product Name: Recombinant Human FOLR1 (C-Fc)**  
**Catalog #: PHH2428**

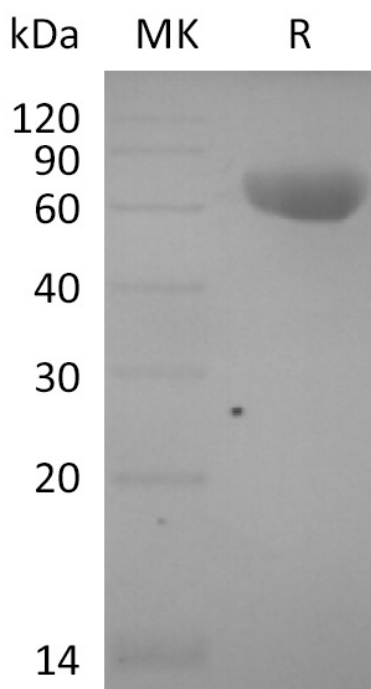


## Summary

<b>Name</b>	FOLR1/Folate Receptor alpha
<b>Purity</b>	Greater than 95% as determined by reducing SDS-PAGE
<b>Endotoxin level</b>	<1 EU/μg as determined by LAL test.
<b>Construction</b>	Recombinant Human Folate receptor alpha is produced by our Mammalian expression system and the target gene encoding Arg25-Ser234 is expressed with a human IgG1 Fc tag at the C-terminus.
<b>Accession #</b>	P15328
<b>Host</b>	Human Cells
<b>Species</b>	Human
<b>Predicted Molecular Mass</b>	51.6 kDa
<b>Formulation</b>	Lyophilized from a 0.2 μm filtered solution of PBS, pH 7.4.
<b>Shipping</b>	The product is shipped at ambient temperature. Upon receipt, store it immediately at the temperature listed below.
<b>Stability&amp;Storage</b>	Store at ≤-70°C, stable for 6 months after receipt. Store at ≤-70°C, stable for 3 months under sterile conditions after opening. Please minimize freeze-thaw cycles.
<b>Reconstitution</b>	Always centrifuge tubes before opening. Do not mix by vortex or pipetting. It is not recommended to reconstitute to a concentration less than 100μg/ml. Dissolve the lyophilized protein in distilled water. Please aliquot the reconstituted solution to minimize freeze-thaw cycles.

## SDS-PAGE image

**Product Name: Recombinant Human FOLR1 (C-Fc)**  
**Catalog #: PHH2428**



### Alternative Names

Folate receptor alpha; FR-alpha; Adult folate-binding protein; FBP; Folate receptor 1; Folate receptor; Ovarian tumor-associated antigen MOv18; FOLR1

### Background

Folate receptor alpha(FOLR) belongs to the folate receptor family, and is primarily expressed in tissues of epithelial origin. It is also expressed in kidney, lung and cerebellum. The secreted form is derived from the membrane-bound form either by cleavage of the GPI anchor, or/and by proteolysis catalyzed by a metalloprotease. FOLR1 binds to folate and reduced folic acid derivatives and mediates delivery of 5-methyltetrahydrofolate and folate analogs into the interior of cells. It has high affinity for folate and folic acid analogs at neutral pH. Exposure to slightly acidic pH after receptor endocytosis triggers a conformation change that strongly reduces its affinity for folates and mediates their release. It is required for normal embryonic development and normal cell proliferation.

### Note

For Research Use Only , Not for Diagnostic Use.