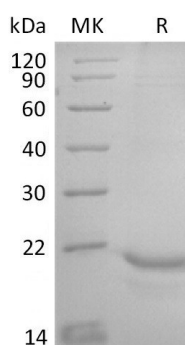


Product Name: Recombinant Human CLDN18.2 (N-Twin strep-Flag)
Catalog #: PHH2426

Summary

Name	CLDN18.2/Claudin 18.2
Purity	Greater than 95% as determined by reducing SDS-PAGE
Endotoxin level	<1 EU/μg as determined by LAL test.
Construction	Recombinant Human CLDN18.2 is produced by our Mammalian expression system and the target gene encoding Met1-Ala200 is expressed with a Twin strep, Flag tag at the N-terminus. The product is not recommended for cell based experiments. *The product is not recommended for cell based experiments.
Accession #	P56856-2
Host	Human cells
Species	Human
Predicted Molecular Mass	25.5 kDa
Formulation	Supplied as a 0.2 μm filtered solution of 50mM HEPES, 150mM NaCl, 0.06% DDM, 0.012% CHS, 10% Glycerol, pH 7.5.
Shipping	The product is shipped on dry ice/polar packs. Upon receipt, store it immediately at the temperature listed below.
Stability&Storage	Store at ≤-70°C, stable for 6 months after receipt. Store at ≤-70°C, stable for 3 months under sterile conditions after opening. Please minimize freeze-thaw cycles.
Reconstitution	

SDS-PAGE image



Background

Product Name: Recombinant Human CLDN18.2 (N-Twin strep-Flag)
Catalog #: PHH2426

Alternative Names

Claudin-18.2; CLDN18.2; CLDN18; Claudin-18; Claudin 18.2

Background

Claudin-18 (CLDN18) is a protein that in humans is encoded by the CLDN18 gene. It belongs to the group of claudins. CLDN18 belongs to the large claudin family of proteins, which form tight junction strands in epithelial cells. CLDN18 plays a major role in tight junction-specific obliteration of the intercellular space, through calcium-independent cell-adhesion activity. CLDN18 has two isoform A1 and isoform A2. Human CLDN18.2 is highly expressed in a significant proportion of gastric and pancreatic adenocarcinomas, while normal tissue expression is limited to the epithelium of the stomach. The restricted expression makes it a potential drug target for the treatment of gastric and pancreatic adenocarcinoma, as evidenced by efforts to target CLDN18.2 via naked antibody and CAR-T modalities. IMAB362 (Claudiximab) is a monoclonal antibody against isoform 2 of Claudin-18. It is under investigation for the treatment of gastrointestinal adenocarcinomas and pancreatic tumors. IMAB362 was developed by Ganymed Pharmaceuticals AG.

Note

For Research Use Only , Not for Diagnostic Use.