

**Product Name: Recombinant Human HLA-A\*0201 TP53 complex Protein (C-10His)**  
**Catalog #: PHH2407**

---

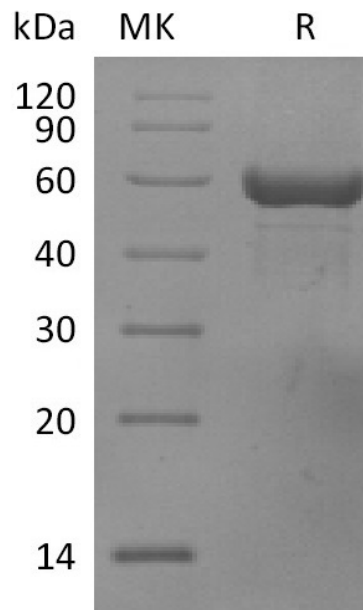
## Summary

<b>Name</b>	HLA-A*0201 TP53 complex Protein
<b>Purity</b>	Greater than 95% as determined by reducing SDS-PAGE
<b>Endotoxin level</b>	<1 EU/μg as determined by LAL test.
<b>Construction</b>	Recombinant Human HLA-A*0201 TP53 complex Protein is produced by our Mammalian expression system and the target gene encoding (HMTEVVRHC) (R175H)&Ile21-Met119&Gly25-Ile308 (Ala269Val) is expressed with a 10His tag at the C-terminus.
<b>Accession #</b>	P61769&A0A140T913
<b>Host</b>	Human cells
<b>Species</b>	Human
<b>Predicted Molecular Mass</b>	49.1 KDa
<b>Formulation</b>	Lyophilized from a 0.2 μm filtered solution of 50mM HEPES, 150mM NaCl, 1mM EDTA, pH 7.4.
<b>Shipping</b>	The product is shipped at ambient temperature. Upon receipt, store it immediately at the temperature listed below.
<b>Stability&amp;Storage</b>	Store at ≤-70°C, stable for 6 months after receipt. Store at ≤-70°C, stable for 3 months under sterile conditions after opening. Please minimize freeze-thaw cycles.
<b>Reconstitution</b>	Always centrifuge tubes before opening. Do not mix by vortex or pipetting. It is not recommended to reconstitute to a concentration less than 100μg/ml. Dissolve the lyophilized protein in distilled water. Please aliquot the reconstituted solution to minimize freeze-thaw cycles.

## SDS-PAGE image

**Product Name:** Recombinant Human HLA-A\*0201 TP53 complex Protein (C-10 His)  
**Catalog #:** PHH2407

---



### Alternative Names

MHC, HLA-A\*0201 TP53 complex Protein

### Background

Cellular tumor antigen p53, is also known as TP 53, is the most frequently mutated gene across all cancers and encodes the tumor suppressor p53 protein. There is a neoepitope of TP53 which is p53R175H HMTEVVRHC. TP53 protein is degraded by the proteasome into peptides, some of which can be presented on the cell surface by human leukocyte antigen (HLA). The p53R175H /HLA-A\*02:01 complex is a particularly attractive therapeutic target, shared by many cancer patients.

### Note

For Research Use Only , Not for Diagnostic Use.