

**Product Name: Recombinant Human IL-1a (C-Fc)**  
**Catalog #: PHH2348**

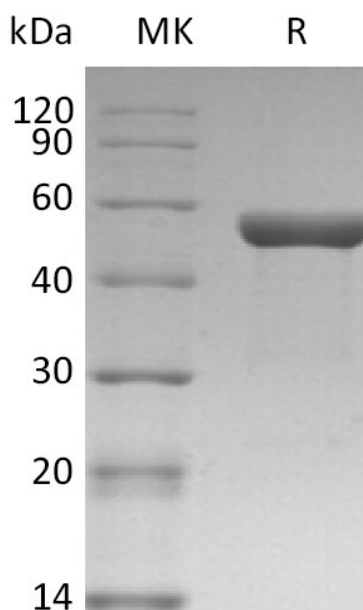


## Summary

<b>Name</b>	IL-1 alpha/IL-1F1/IL-1 $\alpha$ /IL-1a/Interleukin-1 Alpha
<b>Purity</b>	Greater than 95% as determined by reducing SDS-PAGE
<b>Endotoxin level</b>	<1 EU/ $\mu$ g as determined by LAL test.
<b>Construction</b>	Recombinant Human Interleukin-1 alpha is produced by our Mammalian expression system and the target gene encoding Ser113-Ala271 is expressed with a human IgG1 Fc tag at the C-terminus.
<b>Accession #</b>	P01583
<b>Host</b>	Human Cells
<b>Species</b>	Human
<b>Predicted Molecular Mass</b>	44.9 KDa
<b>Formulation</b>	Lyophilized from a 0.2 $\mu$ m filtered solution of 20mM Tris-HCl, 150mM NaCl, pH 7.5.
<b>Shipping</b>	The product is shipped at ambient temperature. Upon receipt, store it immediately at the temperature listed below.
<b>Stability&amp;Storage</b>	Lyophilized protein should be stored at $\leq -20^{\circ}\text{C}$ , stable for one year after receipt. Reconstituted protein solution can be stored at 2-8 $^{\circ}\text{C}$ for 2-7 days. Aliquots of reconstituted samples are stable at $\leq -20^{\circ}\text{C}$ for 3 months.
<b>Reconstitution</b>	Always centrifuge tubes before opening. Do not mix by vortex or pipetting. It is not recommended to reconstitute to a concentration less than 100 $\mu$ g/ml. Dissolve the lyophilized protein in distilled water. Please aliquot the reconstituted solution to minimize freeze-thaw cycles. Always centrifuge tubes before opening. Do not mix by vortex or pipetting. It is not recommended to reconstitute to a concentration less than 100 $\mu$ g/ml. Dissolve the lyophilized protein in distilled water. Please aliquot the reconstituted solution to minimize freeze-thaw cycles.

## SDS-PAGE image

**Product Name: Recombinant Human IL-1a (C-Fc)**  
**Catalog #: PHH2348**



### Alternative Names

Interleukin-1 Alpha; IL-1 Alpha; Hematopoietin-1; IL1A; IL1F1

### Background

Interleukin-1 alpha (IL1 $\alpha$ ) is a cytokine member of the interleukin-1 family. IL-1 consists of two distinct forms: IL1 $\alpha$  and IL1 $\beta$  that recognize the same cell surface receptors but are distinct proteins with approximately 25% amino acid sequence identity. IL1 $\alpha$  is constitutively produced by epithelial cells and plays an essential role in maintenance of skin barrier function. Upon stimulation, a wide variety of cells including osteoblasts, monocytes, macrophages can be induced to express IL1 $\alpha$ . IL1 $\alpha$  possesses a wide range of metabolic, physiological, haematopoietic activities, and is critically involved in the regulation of the immune responses and inflammatory responses.

### Note

For Research Use Only , Not for Diagnostic Use.