

**Product Name: Recombinant Human Siglec-6 (C-Fc)**  
**Catalog #: PHH2343**

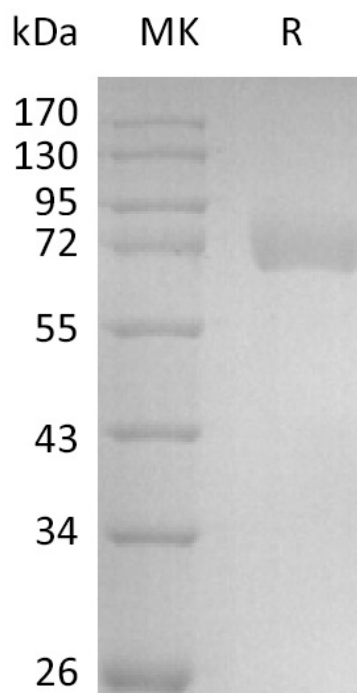


## Summary

<b>Name</b>	Siglec-6/CD327
<b>Purity</b>	Greater than 95% as determined by reducing SDS-PAGE
<b>Endotoxin level</b>	<1 EU/μg as determined by LAL test.
<b>Construction</b>	Recombinant Human Sialic acid-binding Ig-like lectin 6 is produced by our Mammalian expression system and the target gene encoding Glu27-Val331 is expressed with a human IgG1 Fc tag at the C-terminus.
<b>Accession #</b>	O43699-3
<b>Host</b>	Human Cells
<b>Species</b>	Human
<b>Predicted Molecular Mass</b>	60.6 KDa
<b>Formulation</b>	Lyophilized from a 0.2 μm filtered solution of 20mM Tris-HCl, 150mM NaCl, pH 8.5.
<b>Shipping</b>	The product is shipped at ambient temperature. Upon receipt, store it immediately at the temperature listed below.
<b>Stability&amp;Storage</b>	Store at ≤-70°C, stable for 6 months after receipt. Store at ≤-70°C, stable for 3 months under sterile conditions after opening. Please minimize freeze-thaw cycles.
<b>Reconstitution</b>	Always centrifuge tubes before opening. Do not mix by vortex or pipetting. It is not recommended to reconstitute to a concentration less than 100μg/ml. Dissolve the lyophilized protein in distilled water. Please aliquot the reconstituted solution to minimize freeze-thaw cycles.

## SDS-PAGE image

**Product Name: Recombinant Human Siglec-6 (C-Fc)**  
**Catalog #: PHH2343**



### Alternative Names

CD327; CD33 antigen-like 1; CD33L1; CDw327; OB-BP1; Siglec6; Siglec-6

### Background

Siglec-6, also known as CD327, belongs to the immunoglobulin superfamily, SIGLEC (sialic acid binding Ig-like lectin) family. Siglec-6 mediates sialic-acid dependent binding to cells. Siglec-6 binds to alpha-2,6-linked sialic acid. The sialic acid recognition site may be masked by cis interactions with sialic acids on the same cell surface. Siglec-6 may show increasing expression human labor and following childbirth, it has been speculated that this expression helps to slow the tempo of human labor. Siglec-6 is found on B cells and in placenta, and would seem to have a restricted specificity for the sialyl Tn antigen.

### Note

For Research Use Only , Not for Diagnostic Use.