

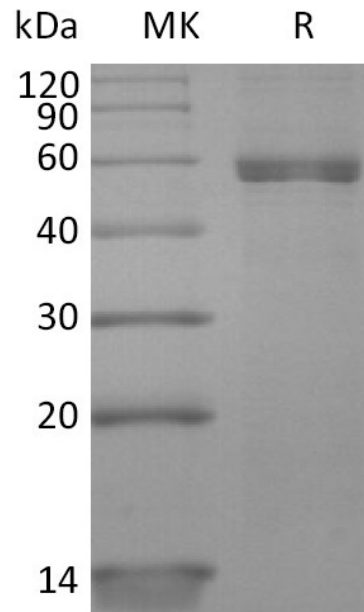
**Product Name: Recombinant Human HLA-A\*0201 NY-ESO-1 complex Protein (C-10His)**  
**Catalog #: PHH2307**

## Summary

<b>Name</b>	HLA-A*0201 NY-ESO-1 complex Protein
<b>Purity</b>	Greater than 95% as determined by reducing SDS-PAGE
<b>Endotoxin level</b>	<1 EU/μg as determined by LAL test.
<b>Construction</b>	Recombinant Human HLA-A*0201 NY-ESO-1 complex Protein is produced by our Mammalian expression system and the target gene encoding (SLLMWITQC)&Ile21-Met119&Gly25-Ile308 (Ala269Val) is expressed with a 10His tag at the C-terminus.
<b>Accession #</b>	P61769&P01892
<b>Host</b>	Human Cells
<b>Species</b>	Human
<b>Predicted Molecular Mass</b>	49.1 KDa
<b>Formulation</b>	Lyophilized from a 0.2 μm filtered solution of 20mM PB, 500mM NaCl, pH7.4.
<b>Shipping</b>	The product is shipped at ambient temperature. Upon receipt, store it immediately at the temperature listed below.
<b>Stability&amp;Storage</b>	Lyophilized protein should be stored at ≤ -20°C, stable for one year after receipt. Reconstituted protein solution can be stored at 2-8°C for 2-7 days. Aliquots of reconstituted samples are stable at ≤ -20°C for 3 months.
<b>Reconstitution</b>	Always centrifuge tubes before opening. Do not mix by vortex or pipetting. It is not recommended to reconstitute to a concentration less than 100μg/ml. Dissolve the lyophilized protein in distilled water. Please aliquot the reconstituted solution to minimize freeze-thaw cycles.

## SDS-PAGE image

**Product Name: Recombinant Human HLA-A\*0201 NY-ESO-1 complex Protein (C-terminus)**  
**Catalog #: PHH2307**



### Alternative Names

MHC; MY-ESO-1

### Background

NY-ESO-1 is a well-known cancer-testis antigen (CTAs) with re-expression in numerous cancer types. Its ability to elicit spontaneous humoral and cellular immune responses, together with its restricted expression pattern, have rendered it a good candidate target for cancer immunotherapy. Optimally assembled peptide-HLA-B2M trimer translocates to the surface of antigen-presenting cells, where it interacts with TCR and CD8 coreceptor on the surface of T cells.

### Note

For Research Use Only , Not for Diagnostic Use.