

Product Name: Recombinant Human TPBG (C-mFc)
Catalog #: PHH2156

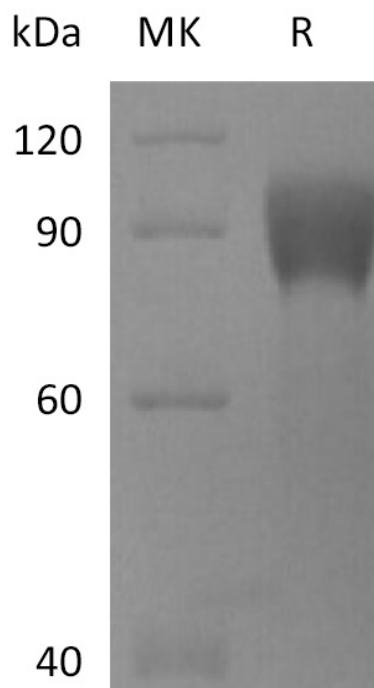


Summary

Name	TPBG/5T4/Trophoblast glycoprotein
Purity	Greater than 95% as determined by reducing SDS-PAGE
Endotoxin level	<1 EU/μg as determined by LAL test.
Construction	Recombinant Human Trophoblast glycoprotein is produced by our Mammalian expression system and the target gene encoding Ser32-Ser355 is expressed with a mouse IgG1 Fc tag at the C-terminus.
Accession #	Q13641
Host	Human Cells
Species	Human
Predicted Molecular Mass	61.7 KDa
Formulation	Lyophilized from a 0.2 μm filtered solution of PBS, pH 7.4.
Shipping	The product is shipped at ambient temperature. Upon receipt, store it immediately at the temperature listed below.
Stability&Storage	Lyophilized protein should be stored at ≤ -20°C, stable for one year after receipt. Reconstituted protein solution can be stored at 2-8°C for 2-7 days. Aliquots of reconstituted samples are stable at ≤ -20°C for 3 months.
Reconstitution	Always centrifuge tubes before opening. Do not mix by vortex or pipetting. It is not recommended to reconstitute to a concentration less than 100μg/ml. Dissolve the lyophilized protein in distilled water. Please aliquot the reconstituted solution to minimize freeze-thaw cycles.

SDS-PAGE image

Product Name: Recombinant Human TPBG (C-mFc)
Catalog #: PHH2156



Alternative Names

5T4 Protein; 5T4AG Protein; M6P1 Protein; WAIF1 Protein; TPBG

Background

Trophoblast glycoprotein, also known as TPBG and 5T4, it belongs to the LRR family of proteins. The C-terminus of LRR N-terminal cap (LRRNT) and LRR 1 are essential for the inhibition of the Wnt signaling pathway. TPBG may function as an inhibitor of Wnt/beta-catenin signaling by indirectly interacting with LRP6 and blocking Wnt3a-dependent LRP6 internalization. It expressed by all types of trophoblasts as early as 9 weeks of development. In adult tissues, the expression is limited to a few epithelial cell types but is found on a variety of carcinoma.

Note

For Research Use Only , Not for Diagnostic Use.