

Product Name: Recombinant Human IL-13 (C-Fc)
Catalog #: PHH2151

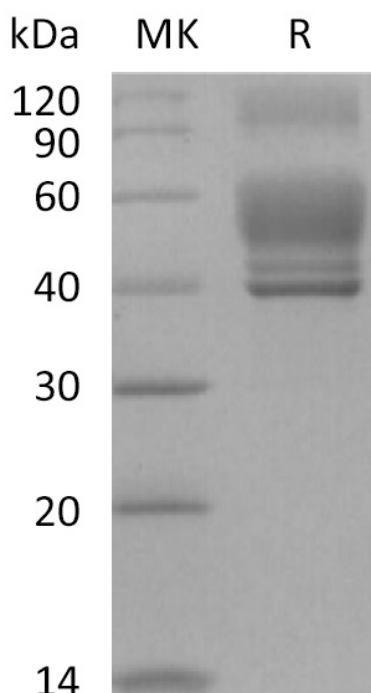


Summary

Name	IL-13/Interleukin-13
Purity	Greater than 95% as determined by reducing SDS-PAGE
Endotoxin level	<1 EU/μg as determined by LAL test.
Construction	Recombinant Human Interleukin-13 is produced by our Mammalian expression system and the target gene encoding Gly21/xa0/xad/xa0Asn132 is expressed with a human IgG1 Fc tag at the C-terminus.
Accession #	AAK53823
Host	Human Cells
Species	Human
Predicted Molecular Mass	39.2 KDa
Formulation	Lyophilized from a 0.2 μm filtered solution of PBS, pH 7.4.
Shipping	The product is shipped at ambient temperature. Upon receipt, store it immediately at the temperature listed below.
Stability&Storage	Lyophilized protein should be stored at ≤ -20°C, stable for one year after receipt. Reconstituted protein solution can be stored at 2-8°C for 2-7 days. Aliquots of reconstituted samples are stable at ≤ -20°C for 3 months.
Reconstitution	Always centrifuge tubes before opening. Do not mix by vortex or pipetting. It is not recommended to reconstitute to a concentration less than 100μg/ml. Dissolve the lyophilized protein in distilled water. Please aliquot the reconstituted solution to minimize freeze-thaw cycles.

SDS-PAGE image

Product Name: Recombinant Human IL-13 (C-Fc)
Catalog #: PHH2151



Alternative Names

Interleukin-13; IL-13

Background

Interleukin-13 is also known as IL-13. It is a protein that in humans is encoded by the IL13 gene. Interleukin-13 is an immunoregulatory cytokine produced primarily by activated Th2 cells. It is involved in several stages of B-cell maturation and differentiation. It up-regulates CD23 and MHC class II expression, and promotes IgE isotype switching of B cells. This cytokine down-regulates macrophage activity, thereby inhibits the production of pro-inflammatory cytokines and chemokines. This cytokine is found to be critical to the pathogenesis of allergen-induced asthma but operates through mechanisms independent of IgE and eosinophils.

Note

For Research Use Only , Not for Diagnostic Use.