

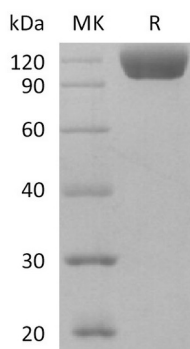
Product Name: Recombinant Human Siglec-10 (C-Fc)
Catalog #: PHH2149



Summary

Name	Siglec-10
Purity	Greater than 95% as determined by reducing SDS-PAGE
Endotoxin level	<1 EU/μg as determined by LAL test.
Construction	Recombinant Human Sialic Acid-binding Ig-like Lectin 10 is produced by our Mammalian expression system and the target gene encoding Met17/xadThr546 is expressed with a human IgG1 Fc tag at the C-terminus.
Accession #	Q96LC7
Host	Human Cells
Species	Human
Predicted Molecular Mass	85.1 KDa
Formulation	Lyophilized from a 0.2 μm filtered solution of 20mM Tris-HCl, 6% Sucrose, 4% Mannitol, 50mM NaCl, 0.05% Tween 80, pH 8.0.
Shipping	The product is shipped at ambient temperature. Upon receipt, store it immediately at the temperature listed below.
Stability&Storage	Store at ≤-70°C, stable for 6 months after receipt. Store at ≤-70°C, stable for 3 months under sterile conditions after opening. Please minimize freeze-thaw cycles.
Reconstitution	Always centrifuge tubes before opening. Do not mix by vortex or pipetting. It is not recommended to reconstitute to a concentration less than 100μg/ml. Dissolve the lyophilized protein in distilled water. Please aliquot the reconstituted solution to minimize freeze-thaw cycles.

SDS-PAGE image



Product Name: Recombinant Human Siglec-10 (C-Fc)
Catalog #: PHH2149



Background

Alternative Names

SIGLEC10; MGC126774; PRO940; Siglec10; SLG2; sialic acid-binding Ig-like lectin 10; Siglec-10; siglec-like gene 2; Siglec-like protein 2; SLG2sialic acid binding Ig-like lectin 10 Ig-like lectin 7

Background

Siglecs (sialic acid binding Ig-like lectins) are I-type lectins that belong to the immunoglobulin superfamily. They are characterized by an N-terminal Ig-like V-type domain which mediates sialic acid binding, followed by a varying number of Ig-like C2-type domains. Siglecs 5-11 constitute the CD33/Siglec-3 related group, and are differentially expressed in the hematopoietic system. Siglec-G is the apparent ortholog of human Siglec-10. We describe here a novel member of the siglec protein family that shares a similar structure including five Ig-like domains, a transmembrane domain, and a cytoplasmic tail containing two ITIM-signaling motifs. Siglec-10 was identified through database mining of an asthmatic eosinophil EST library. Siglec-10 binds sialated proteins and lipids in alpha 2,3 or alpha 2,6 linkage and shows a preference for GT1b gangliosides. This binding can be modulated by cis interactions of Siglec-10 with sialated molecules expressed on the same cell. When tyrosine phosphorylated, the cytoplasmic ITIMs interact with phosphatases SHP-1 and SHP-2 to propagate inhibitory signals. The Siglec-10-VAP-1 interaction seems to mediate lymphocyte adhesion to endothelium and has the potential to modify the inflammatory microenvironment via the enzymatic end products.

Note

For Research Use Only , Not for Diagnostic Use.