

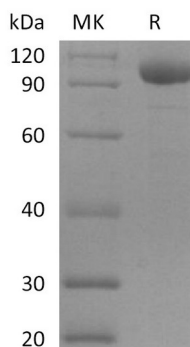
Product Name: Recombinant Human LILRB2 (C-Fc)
Catalog #: PHH2145



Summary

Name	LILRB2/ILT4/CD85d/Lir-2/LIR2/MIR10/Leukocyte Ig-Like Receptor B2/Leukocyte Immunoglobulin-Like Receptor Subfamily B Member 2
Purity	Greater than 95% as determined by reducing SDS-PAGE
Endotoxin level	<1 EU/μg as determined by LAL test.
Construction	Recombinant Human Leukocyte Immunoglobulin-Like Receptor Subfamily B Member 2 is produced by our Mammalian expression system and the target gene encoding Gln22-His458 is expressed with a human IgG1 Fc tag at the C-terminus.
Accession #	AAH36827.1
Host	Human Cells
Species	Human
Predicted Molecular Mass	74.5 KDa
Formulation	Lyophilized from a 0.2 μm filtered solution of 20mM PB, 150mM NaCl, pH 7.4.
Shipping	The product is shipped at ambient temperature. Upon receipt, store it immediately at the temperature listed below.
Stability&Storage	Store at ≤-70°C, stable for 6 months after receipt. Store at ≤-70°C, stable for 3 months under sterile conditions after opening. Please minimize freeze-thaw cycles.
Reconstitution	Always centrifuge tubes before opening. Do not mix by vortex or pipetting. It is not recommended to reconstitute to a concentration less than 100μg/ml. Dissolve the lyophilized protein in distilled water. Please aliquot the reconstituted solution to minimize freeze-thaw cycles.

SDS-PAGE image



Product Name: Recombinant Human LILRB2 (C-Fc)
Catalog #: PHH2145



Background

Alternative Names

Leukocyte Immunoglobulin-Like Receptor Subfamily B Member 2; LIR-2; Leukocyte Immunoglobulin-Like Receptor 2; CD85 Antigen-Like Family Member D; Immunoglobulin-Like Transcript 4; ILT-4; Monocyte/Macrophage Immunoglobulin-Like Receptor 10; MIR-10; CD85d; LILRB2; ILT4; LIR2; MIR10

Background

Members of the immunoglobulin-like transcript (ILT) family are activating and inhibitory immunoreceptors whose genes are located same locus that encodes killer cell Ig-like receptors (KIR). Leukocyte Immunoglobulin-Like Receptor Subfamily B Member 2 (LIR-2) is a type I transmembrane protein. LIR-2 is expressed primarily on monocytes and dendritic cells (DC). Human LIR-2 is produced as a 598 amino acid precursor including a 21 aa signal sequence, a 440 aa extracellular domain (ECD), a 21 aa transmembrane segment, and a 116 aa cytoplasmic domain. LIR-2 binds to Classical MHC I proteins. Ligation of LIR-2 includes Tyr phosphorylation within its cytoplasmic ITIMs, a requirement for association with SHP-1. LIR-2 mediates tolerogenic DC-induced CD4+ T cell energy in vitro and in vivo.

Note

For Research Use Only , Not for Diagnostic Use.