

Product Name: Recombinant Human CD3E (C-mFc)
Catalog #: PHH2099

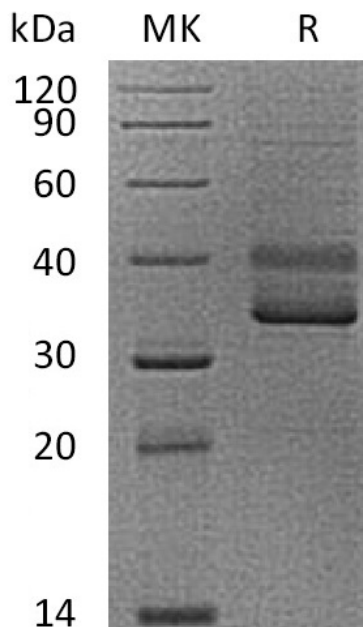


Summary

Name	CD3E/CD3 epsilon/CD3ε/T-cell surface glycoprotein CD3 epsilon chain
Purity	Greater than 95% as determined by reducing SDS-PAGE
Endotoxin level	<1 EU/μg as determined by LAL test.
Construction	Recombinant Human T-Cell Surface Glycoprotein CD3 Epsilon Chain is produced by our Mammalian expression system and the target gene encoding Gln22-Thr48 is expressed with a mouse IgG1 Fc tag at the C-terminus.
Accession #	P07766
Host	Human Cells
Species	Human
Predicted Molecular Mass	28.5 KDa
Formulation	Lyophilized from a 0.2 μm filtered solution of PBS, pH 7.4.
Shipping	The product is shipped at ambient temperature. Upon receipt, store it immediately at the temperature listed below.
Stability&Storage	Lyophilized protein should be stored at ≤ -20°C, stable for one year after receipt. Reconstituted protein solution can be stored at 2-8°C for 2-7 days. Aliquots of reconstituted samples are stable at ≤ -20°C for 3 months.
Reconstitution	Always centrifuge tubes before opening. Do not mix by vortex or pipetting. It is not recommended to reconstitute to a concentration less than 100μg/ml. Dissolve the lyophilized protein in distilled water. Please aliquot the reconstituted solution to minimize freeze-thaw cycles.

SDS-PAGE image

Product Name: Recombinant Human CD3E (C-mFc)
Catalog #: PHH2099



Alternative Names

T-Cell Surface Glycoprotein CD3 Epsilon Chain; T-Cell Surface Antigen T3/Leu-4 Epsilon Chain; CD3e; CD3E; T3E

Background

T-Cell Surface Glycoprotein CD3 ϵ Chain (CD3 ϵ) is a single-pass type I membrane protein. CD3 ϵ contains 1 Ig-like (immunoglobulin-like) domain and 1 ITAM domain. CD3 ϵ is a polypeptide encoded by the CD3E gene on chromosome 11 in humans. The T cell receptor-CD3 complex (TCR/CD3 complex) is involved in T-cell development and several intracellular signal-transduction pathways. This complex is critical for T-cell development and function, and represents one of the most complex transmembrane receptors. The T cell receptor-CD3 complex is unique in having ten cytoplasmic immunoreceptor tyrosine-based activation motifs (ITAMs). TCR/CD3 complex plays an important role in coupling antigen recognition to several intracellular signal-transduction pathways.

Note

For Research Use Only , Not for Diagnostic Use.