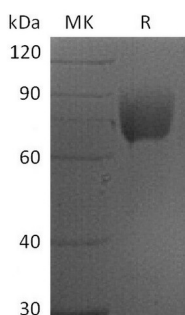


## Summary

<b>Name</b>	B7-1/CD80/T-lymphocyte Activation Antigen CD80
<b>Purity</b>	Greater than 95% as determined by reducing SDS-PAGE
<b>Endotoxin level</b>	<1 EU/μg as determined by LAL test.
<b>Construction</b>	Recombinant Human Activation B7-1 Antigen is produced by our Mammalian expression system and the target gene encoding Val35-Leu242 is expressed with a mouse IgG1 Fc tag at the C-terminus.
<b>Accession #</b>	P33681
<b>Host</b>	Human Cells
<b>Species</b>	Human
<b>Predicted Molecular Mass</b>	50.5 KDa
<b>Formulation</b>	Lyophilized from a 0.2 μm filtered solution of PBS, pH 7.4.
<b>Shipping</b>	The product is shipped at ambient temperature. Upon receipt, store it immediately at the temperature listed below.
<b>Stability&amp;Storage</b>	Store at ≤-70°C, stable for 6 months after receipt. Store at ≤-70°C, stable for 3 months under sterile conditions after opening. Please minimize freeze-thaw cycles.
<b>Reconstitution</b>	Always centrifuge tubes before opening. Do not mix by vortex or pipetting. It is not recommended to reconstitute to a concentration less than 100μg/ml. Dissolve the lyophilized protein in distilled water. Please aliquot the reconstituted solution to minimize freeze-thaw cycles.

## SDS-PAGE image



## Background

**Product Name: Recombinant Human B7-1 (C-mFc)**  
**Catalog #: PHH2026**

---



**Alternative Names**

CD80; Activation B7-1 antigen; B7; BB1; CD28LG1; CD28LGB7-1 antigen; T-lymphocyte activation antigen CD80

**Background**

Cluster of Differentiation 80, also called B7-1, is a member of cell surface immunoglobulin superfamily which plays key, yet distinct roles in the activation of T cells. It is the ligand for two different proteins on the T cell surface: CD28 and CTLA-4. Studies have shown that CTLA-4 binds mostly to CD80. The structure presents two extracellular domains: a membrane distal variable-like domain (IgV) and a membrane proximal Ig constant-like domain (IgC) along with an intracellular domain. Both IgV and IgC consist of anti-parallel beta sandwiches joined by a short linker region. CD80 is mostly expressed on the surface of antigen-presenting cells including activated B cells, macrophages and dendritic cells.

**Note**

For Research Use Only , Not for Diagnostic Use.