

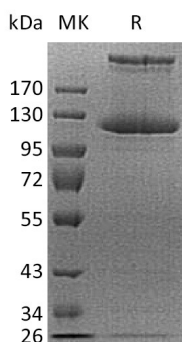
Product Name: Recombinant Human COL21A1 (C-6His)
Catalog #: PHH2007



Summary

Name	COL21A1/Collagen alpha-1(XI) chain
Purity	Greater than 95% as determined by reducing SDS-PAGE
Endotoxin level	<1 EU/μg as determined by LAL test.
Construction	Recombinant Human Collagen Alpha-1(XI) Chain is produced by our Mammalian expression system and the target gene encoding Glu23-Tyr957 is expressed with a 6His tag at the C-terminus.
Accession #	Q96P44
Host	Human Cells
Species	Human
Predicted Molecular Mass	97.9 KDa
Formulation	Lyophilized from a 0.2 μm filtered solution of PBS, pH 7.4.
Shipping	The product is shipped at ambient temperature. Upon receipt, store it immediately at the temperature listed below.
Stability&Storage	Store at ≤-70°C, stable for 6 months after receipt. Store at ≤-70°C, stable for 3 months under sterile conditions after opening. Please minimize freeze-thaw cycles.
Reconstitution	Always centrifuge tubes before opening. Do not mix by vortex or pipetting. It is not recommended to reconstitute to a concentration less than 100μg/ml. Dissolve the lyophilized protein in distilled water. Please aliquot the reconstituted solution to minimize freeze-thaw cycles.

SDS-PAGE image



Background

Product Name: Recombinant Human COL21A1 (C-6His)
Catalog #: PHH2007



Alternative Names

COL21A1; collagen, type XXI, alpha 1; collagen alpha-1(XXI) chain; alpha 1 type XXI collagen; FP633; COLA1L; dJ708F5.1; dJ682J15.1; FLJ39125; FLJ44623; MGC26619; DKFZp564B052

Background

Collagen α -1(XXI) Chain (COL21A1) is a member of the fibril-associated collagens with interrupted helices (FACIT) family. COL21A1 is a secreted protein and contains six collagen-like domains, one TSP N-terminal (TSPN) domain, and one VWFA domain. COL21A1 is widely expressed in many tissues with the highest expression observed at the fetal stage. COL21A1 is stimulated by PDGF/platelet-derived growth factor. Type XXI collagen is localized to tissues containing type I collagen; it may serve to maintain the integrity of the extracellular matrix.

Note

For Research Use Only , Not for Diagnostic Use.