

Product Name: Recombinant Human IGSF11 (C-Fc)
Catalog #: PHH1992

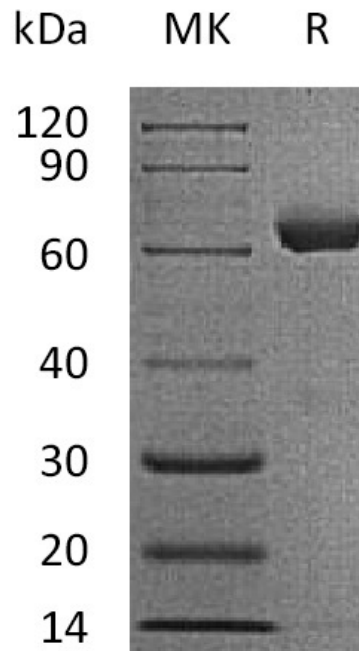


Summary

Name	VSIG3/IGSF11/BTIGSF/CXADR like 1
Purity	Greater than 95% as determined by reducing SDS-PAGE
Endotoxin level	<1 EU/μg as determined by LAL test.
Construction	Recombinant Human Immunoglobulin Superfamily Member 11 is produced by our Mammalian expression system and the target gene encoding Leu23-Gly245 is expressed with a human IgG1 Fc tag at the C-terminus.
Accession #	Q5DX21
Host	Human Cells
Species	Human
Predicted Molecular Mass	50.7 KDa
Formulation	Lyophilized from a 0.2 μm filtered solution of PBS, pH 7.4.
Shipping	The product is shipped at ambient temperature. Upon receipt, store it immediately at the temperature listed below.
Stability&Storage	Lyophilized protein should be stored at ≤ -20°C, stable for one year after receipt. Reconstituted protein solution can be stored at 2-8°C for 2-7 days. Aliquots of reconstituted samples are stable at ≤ -20°C for 3 months.
Reconstitution	Always centrifuge tubes before opening. Do not mix by vortex or pipetting. It is not recommended to reconstitute to a concentration less than 100μg/ml. Dissolve the lyophilized protein in distilled water. Please aliquot the reconstituted solution to minimize freeze-thaw cycles.

SDS-PAGE image

Product Name: Recombinant Human IGSF11 (C-Fc)
Catalog #: PHH1992



Alternative Names

BT-IgSF; CT119; CXADRL1; Igsf13; VSIG3

Background

Immunoglobulin superfamily member 11 (IGSF11) is abundantly expressed in testis and ovary and to a lower extent in brain, kidney and skeletal muscle. IGSF11 functions as a cell adhesion molecule through homophilic interaction and can also stimulate cell growth. IGSF proteins share significant homology with endothelial cell-selective adhesion molecule and coxsackievirus and adenovirus receptor, which mediates cell attachment and homotypic intercellular interactions.

Note

For Research Use Only , Not for Diagnostic Use.