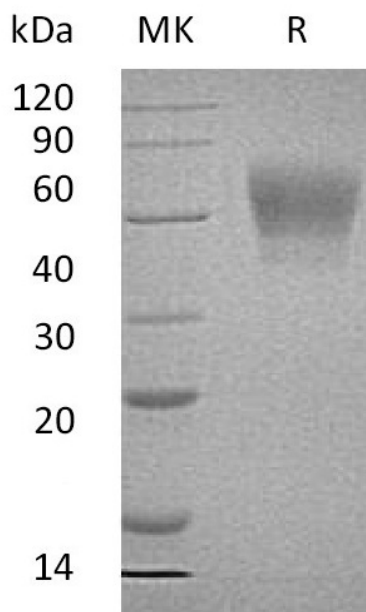


## Summary

<b>Name</b>	TPBG/5T4/Trophoblast glycoprotein
<b>Purity</b>	Greater than 95% as determined by reducing SDS-PAGE
<b>Endotoxin level</b>	<1 EU/μg as determined by LAL test.
<b>Construction</b>	Recombinant Human Trophoblast Glycoprotein is produced by our Mammalian expression system and the target gene encoding Ser32-Ser355 is expressed with a 6His tag at the C-terminus.
<b>Accession #</b>	Q13641
<b>Host</b>	Human Cells
<b>Species</b>	Human
<b>Predicted Molecular Mass</b>	36.1 KDa
<b>Formulation</b>	Lyophilized from a 0.2 μm filtered solution of PBS, pH7.4 .
<b>Shipping</b>	The product is shipped at ambient temperature. Upon receipt, store it immediately at the temperature listed below.
<b>Stability&amp;Storage</b>	Store at ≤-70°C, stable for 6 months after receipt. Store at ≤-70°C, stable for 3 months under sterile conditions after opening. Please minimize freeze-thaw cycles.
<b>Reconstitution</b>	Always centrifuge tubes before opening. Do not mix by vortex or pipetting. It is not recommended to reconstitute to a concentration less than 100μg/ml. Dissolve the lyophilized protein in distilled water. Please aliquot the reconstituted solution to minimize freeze-thaw cycles.

## SDS-PAGE image

**Product Name: Recombinant Human TPBG (C-6His)**  
**Catalog #: PHH1977**



### Alternative Names

5T4 Protein; 5T4AG Protein; M6P1 Protein; WAIF1 Protein; TPBG

### Background

Trophoblast glycoprotein, also known as TPBG and 5T4, it belongs to the LRR family of proteins. The C-terminus of LRR N-terminal cap (LRRNT) and LRR 1 are essential for the inhibition of the Wnt signaling pathway. TPBG may function as an inhibitor of Wnt/beta-catenin signaling by indirectly interacting with LRP6 and blocking Wnt3a-dependent LRP6 internalization. It expressed by all types of trophoblasts as early as 9 weeks of development. In adult tissues, the expression is limited to a few epithelial cell types but is found on a variety of carcinoma.

### Note

For Research Use Only , Not for Diagnostic Use.