

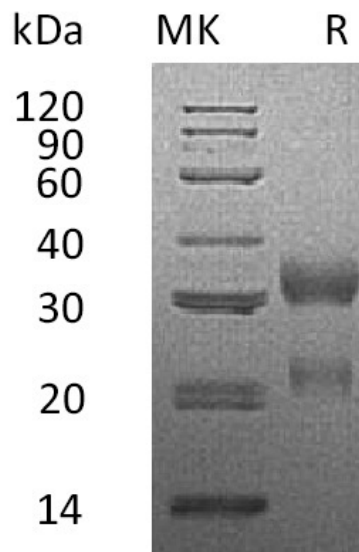
Product Name: Recombinant Human CGA&CGB3 (C-Flag,C-6His)
Catalog #: PHH1976

Summary

Name	CGA&CGB3 Heterodimer/Glycoprotein hormones alpha chain & Choriogonadotropin subunit beta 3 Heterodimer
Purity	Greater than 95% as determined by reducing SDS-PAGE
Endotoxin level	<1 EU/μg as determined by LAL test.
Construction	Recombinant Human Glycoprotein Hormones Alpha Chain & Choriogonadotropin Subunit Beta 3 is produced by our Mammalian expression system and the target gene encoding Ala25-Ser116&Ser21-Gln165 is expressed with a Flag tag at the C-terminus, 6His tag at the C-terminus.
Accession #	P01215&P0DN86
Host	Human Cells
Species	Human
Predicted Molecular Mass	11.6&16.6 KDa
Formulation	Lyophilized from a 0.2 μm filtered solution of PBS, pH 7.4.
Shipping	The product is shipped at ambient temperature. Upon receipt, store it immediately at the temperature listed below.
Stability&Storage	Store at ≤-70°C, stable for 6 months after receipt. Store at ≤-70°C, stable for 3 months under sterile conditions after opening. Please minimize freeze-thaw cycles.
Reconstitution	Always centrifuge tubes before opening. Do not mix by vortex or pipetting. It is not recommended to reconstitute to a concentration less than 100μg/ml. Dissolve the lyophilized protein in distilled water. Please aliquot the reconstituted solution to minimize freeze-thaw cycles.

SDS-PAGE image

Product Name: Recombinant Human CGA&CGB3 (C-Flag,C-6His)
Catalog #: PHH1976



Alternative Names

Anterior pituitary glycoprotein hormones common subunit alpha; Choriogonadotropin alpha chain; Chorionic gonadotrophin subunit alpha; CG-alpha; Follicle-stimulating hormone alpha chain; FSH-alpha; Follicitropin alpha chain; Luteinizing hormone alpha chain; LSH-alpha; Thyroid-stimulating hormone alpha chain; TSH-alpha

Background

Glycoprotein hormones alpha chain, also known as CGA, belongs to the glycoprotein hormones subunit alpha family. The subunit of CGA is a heterodimer consists of a common alpha chain and a unique beta chain which confers biological specificity to thyrotropin, lutropin, follitropin and gonadotropin. It has positive regulation of cell migration, cell proliferation and transcription from RNA polymerase II promoter and participates in the peptide hormone processing and signal transduction.

Note

For Research Use Only , Not for Diagnostic Use.