

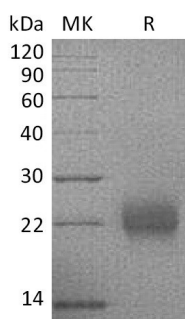
Product Name: Recombinant Human CGA (C-6His)
Catalog #: PHH1934



Summary

| | |
|---------------------------------|--|
| Name | CGA/FSH alpha/CG-alpha/TSH-alpha/Glycoprotein hormones alpha chain |
| Purity | Greater than 95% as determined by reducing SDS-PAGE |
| Endotoxin level | <1 EU/μg as determined by LAL test. |
| Construction | Recombinant Human Glycoprotein Hormones Alpha Chain is produced by our Mammalian expression system and the target gene encoding Ala25-Ser116 is expressed with a 6His tag at the C-terminus. |
| Accession # | P01215 |
| Host | Human Cells |
| Species | Human |
| Predicted Molecular Mass | 11 KDa |
| Formulation | Lyophilized from a 0.2 μm filtered solution of PBS, pH 7.4. |
| Shipping | The product is shipped at ambient temperature. Upon receipt, store it immediately at the temperature listed below. |
| Stability&Storage | Store at ≤-70°C, stable for 6 months after receipt. Store at ≤-70°C, stable for 3 months under sterile conditions after opening. Please minimize freeze-thaw cycles. |
| Reconstitution | Always centrifuge tubes before opening. Do not mix by vortex or pipetting. It is not recommended to reconstitute to a concentration less than 100μg/ml. Dissolve the lyophilized protein in distilled water. Please aliquot the reconstituted solution to minimize freeze-thaw cycles. |

SDS-PAGE image



Background

Product Name: Recombinant Human CGA (C-6His)
Catalog #: PHH1934



Alternative Names

Anterior pituitary glycoprotein hormones common subunit alpha; Choriogonadotropin alpha chain; Chorionic gonadotrophin subunit alpha; CG-alpha; Follicle-stimulating hormone alpha chain; FSH-alpha; Follitropin alpha chain; Luteinizing hormone alpha chain; LSH-alpha; Thyroid-stimulating hormone alpha chain; TSH-alpha

Background

Glycoprotein hormones alpha chain, also known as CGA, belongs to the glycoprotein hormones subunit alpha family. The subunit of CGA is a heterodimer consists of a common alpha chain and a unique beta chain which confers biological specificity to thyrotropin, lutropin, follitropin and gonadotropin. It has positive regulation of cell migration, cell proliferation and transcription from RNA polymerase II promoter and participates in the peptide hormone processing and signal transduction.

Note

For Research Use Only , Not for Diagnostic Use.