

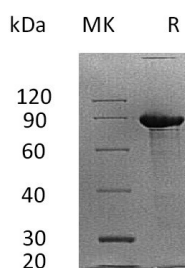
Product Name: Recombinant Human SDC1 (C-Fc)
Catalog #: PHH1920



Summary

Name	Syndecan-1/SDC1/CD138
Purity	Greater than 95% as determined by reducing SDS-PAGE
Endotoxin level	<1 EU/μg as determined by LAL test.
Construction	Recombinant Human Syndecan-1 is produced by our Mammalian expression system and the target gene encoding Gln18-Glu251 is expressed with a human IgG1 Fc tag at the C-terminus.
Accession #	AAH08765.1
Host	Human Cells
Species	Human
Predicted Molecular Mass	51 KDa
Formulation	Lyophilized from a 0.2 μm filtered solution of PBS, pH 7.4.
Shipping	The product is shipped at ambient temperature. Upon receipt, store it immediately at the temperature listed below.
Stability&Storage	Store at ≤-70°C, stable for 6 months after receipt. Store at ≤-70°C, stable for 3 months under sterile conditions after opening. Please minimize freeze-thaw cycles.
Reconstitution	Always centrifuge tubes before opening. Do not mix by vortex or pipetting. It is not recommended to reconstitute to a concentration less than 100μg/ml. Dissolve the lyophilized protein in distilled water. Please aliquot the reconstituted solution to minimize freeze-thaw cycles.

SDS-PAGE image



Background

Product Name: Recombinant Human SDC1 (C-Fc)
Catalog #: PHH1920



Alternative Names

Syndecan-1; SYND1; CD138; SDC1; SDC

Background

Syndecan-1 is a single-pass type I membrane protein that belongs to the syndecan proteoglycan family. The syndecans mediate cell binding, cell signaling, and cytoskeletal organization and syndecan receptors are required for internalization of the HIV-1 tat protein. Human SDC1 is synthesized as a 310 amino acid precursor that contains a 22 amino acid signal sequence, and a 288 amino acid mature chain. The Syndecan-1 protein functions as an integral membrane protein and participates in cell proliferation, cell migration and cell-matrix interactions via its receptor for extracellular matrix proteins. Altered Syndecan-1 expression has been detected in several different tumor types.

Note

For Research Use Only , Not for Diagnostic Use.