

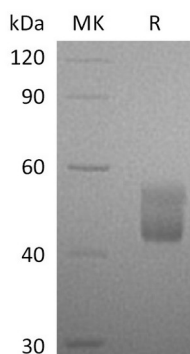
Product Name: Recombinant Human CFHR3 (C-6His)
Catalog #: PHH1908



Summary

| | |
|---------------------------------|--|
| Name | CFHR3/Complement Factor H-related Protein 3 |
| Purity | Greater than 95% as determined by reducing SDS-PAGE |
| Endotoxin level | <1 EU/μg as determined by LAL test. |
| Construction | Recombinant Human Complement Factor H-related Protein 3 is produced by our Mammalian expression system and the target gene encoding Gln19-Glu330 is expressed with a 6His tag at the C-terminus. |
| Accession # | Q02985 |
| Host | Human Cells |
| Species | Human |
| Predicted Molecular Mass | 36.4 KDa |
| Formulation | Lyophilized from a 0.2 μm filtered solution of PBS, pH 7.4. |
| Shipping | The product is shipped at ambient temperature. Upon receipt, store it immediately at the temperature listed below. |
| Stability&Storage | Store at ≤-70°C, stable for 6 months after receipt. Store at ≤-70°C, stable for 3 months under sterile conditions after opening. Please minimize freeze-thaw cycles. |
| Reconstitution | Always centrifuge tubes before opening. Do not mix by vortex or pipetting. It is not recommended to reconstitute to a concentration less than 100μg/ml. Dissolve the lyophilized protein in distilled water. Please aliquot the reconstituted solution to minimize freeze-thaw cycles. |

SDS-PAGE image



Background

Product Name: Recombinant Human CFHR3 (C-6His)
Catalog #: PHH1908



Alternative Names

Complement factor H-related protein 3; FHR-3; DOWN16; H factor-like protein 3; CFHR3; CFHL3

Background

Complement factor H-related protein 3 is a protein that in humans is encoded by the CFHR3 gene. It is a secreted protein that belongs to the complement factor H protein family. Members of the H-related protein family are exclusively composed of individually folded protein domains. CFHR3 is synthesized as a 330 amino acid precursor that contains an 18 amino acid signal peptide and a 312 amino acid mature chain. Human CFHR3 protein might be involved in complement regulation.

Note

For Research Use Only , Not for Diagnostic Use.