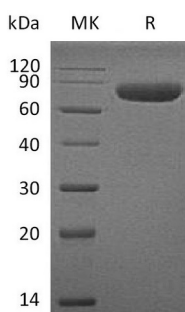


Summary

| | |
|---------------------------------|--|
| Name | CD38/ADP-ribosyl Cyclase 1/cyclic ADP-ribose Hydrolase 1 |
| Purity | Greater than 95% as determined by reducing SDS-PAGE |
| Endotoxin level | <1 EU/μg as determined by LAL test. |
| Construction | Recombinant Human ADP-ribosyl Cyclase/cyclic ADP-ribose Hydrolase 1 is produced by our Mammalian expression system and the target gene encoding Val43-Ile300 is expressed with a mouse IgG1 Fc tag at the C-terminus. |
| Accession # | P28907 |
| Host | Human Cells |
| Species | Human |
| Predicted Molecular Mass | 56.5 KDa |
| Formulation | Lyophilized from a 0.2 μm filtered solution of PBS, pH 7.4. |
| Shipping | The product is shipped at ambient temperature. Upon receipt, store it immediately at the temperature listed below. |
| Stability&Storage | Store at ≤-70°C, stable for 6 months after receipt. Store at ≤-70°C, stable for 3 months under sterile conditions after opening. Please minimize freeze-thaw cycles. |
| Reconstitution | Always centrifuge tubes before opening. Do not mix by vortex or pipetting. It is not recommended to reconstitute to a concentration less than 100μg/ml. Dissolve the lyophilized protein in distilled water. Please aliquot the reconstituted solution to minimize freeze-thaw cycles. |

SDS-PAGE image



Background

Product Name: Recombinant Human CD38 (C-mFc)
Catalog #: PHH1881



Alternative Names

ADP-ribosyl cyclase 1; cyclic ADP-ribose hydrolase;CD38;T10

Background

CD38, also called ADP-ribosyl cyclase, is a Type II integral membrane protein with 301 amino acids in length that belongs to the ADP-ribosyl cyclase family. It synthesizes the second messengers cyclic ADP-ribose and nicotinate-adenine dinucleotide phosphate, the former a second messenger for glucose-induced insulin secretion. And also moonlights as a receptor in cells of the immune system. CD38 is expressed in B and T lymphocytes, osteoclasts, and in cardiac, pancreatic, liver and kidney cells. Through its production of cyclic ADP-ribose, CD38 modulates calcium-mediated signal transduction in many types of cells, including neutrophils and pancreatic beta cells.

Note

For Research Use Only , Not for Diagnostic Use.