

**Product Name: Recombinant Human PECAM-1 (C-Fc)**  
**Catalog #: PHH1875**



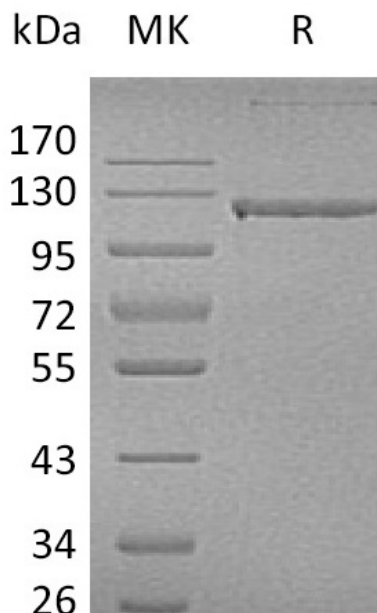
---

## Summary

<b>Name</b>	CD31/PECAM-1/Platelet Endothelial Cell Adhesion Molecule
<b>Purity</b>	Greater than 95% as determined by reducing SDS-PAGE
<b>Endotoxin level</b>	<1 EU/μg as determined by LAL test.
<b>Construction</b>	Recombinant Human Platelet Endothelial Cell Adhesion Molecule is produced by our Mammalian expression system and the target gene encoding Gln28/xadLys601 is expressed with a human IgG1 Fc tag at the C-terminus.
<b>Accession #</b>	AAH22512.1
<b>Host</b>	Human Cells
<b>Species</b>	Human
<b>Predicted Molecular Mass</b>	91.6 KDa
<b>Formulation</b>	Lyophilized from a 0.2 μm filtered solution of PBS, pH 7.4.
<b>Shipping</b>	The product is shipped at ambient temperature. Upon receipt, store it immediately at the temperature listed below.
<b>Stability&amp;Storage</b>	Lyophilized protein should be stored at ≤ -20°C, stable for one year after receipt. Reconstituted protein solution can be stored at 2-8°C for 2-7 days. Aliquots of reconstituted samples are stable at ≤ -20°C for 3 months.
<b>Reconstitution</b>	Always centrifuge tubes before opening. Do not mix by vortex or pipetting. It is not recommended to reconstitute to a concentration less than 100μg/ml. Dissolve the lyophilized protein in distilled water. Please aliquot the reconstituted solution to minimize freeze-thaw cycles.

## SDS-PAGE image

**Product Name: Recombinant Human PECAM-1 (C-Fc)**  
**Catalog #: PHH1875**



### Alternative Names

Platelet endothelial cell adhesion molecule; PECAM-1; EndoCAM; GPIIA; PECA1; CD31; PECAM1

### Background

Platelet Endothelial Cell Adhesion Molecule (PECAM1, CD31), is a heavily glycosylated transmembrane protein belonging to the immunoglobulin (Ig) superfamily of cell adhesion molecules. CD31 is composed of an extracellular domain (ECD) of 574 amino acids (aa) containing six Ig-like domains, a transmembrane domain, and a 118 aa cytoplasmic domain. CD31 is highly expressed on endothelial cells and at a lower level on platelets, granulocytes, macrophages, dendritic cells, T and B cells, and natural killer (NK) cells. It is involved in cell adhesion and is required for transepithelial migration of leukocytes (TEM). CD31 acts as a homophilic receptor through its extracellular domain and is involved in downstream signaling via its cytoplasmic domain. This domain contains highly conserved ITIM motifs which, once tyrosine phosphorylated, recruit and activate the signaling molecules Src and SHP2. The resulting inhibition of TCR signaling increases the activation threshold of T cells, thus reinforcing peripheral tolerance and preventing development of autoimmunity. CD31 additionally regulates immune responses by acting as a key inhibitory receptor in dendritic cell development. CD31 is required for the transendothelial migration of leukocytes through intercellular junctions of vascular endothelial cells.

### Note

For Research Use Only , Not for Diagnostic Use.