

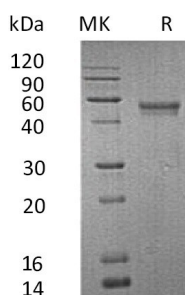
Product Name: Recombinant Human XCL1 (C-Fc-6His)
Catalog #: PHH1834



Summary

Name	XCL1/Lymphotactin/LTN
Purity	Greater than 95% as determined by reducing SDS-PAGE
Endotoxin level	<1 EU/μg as determined by LAL test.
Construction	Recombinant Human Lymphotactin is produced by our Mammalian expression system and the target gene encoding Val22-Gly114 is expressed with a human IgG1 Fc, 6His tag at the C-terminus.
Accession #	P47992
Host	Human Cells
Species	Human
Predicted Molecular Mass	38.2 KDa
Formulation	Lyophilized from a 0.2 μm filtered solution of PBS, pH 7.4.
Shipping	The product is shipped at ambient temperature. Upon receipt, store it immediately at the temperature listed below.
Stability&Storage	Store at ≤-70°C, stable for 6 months after receipt. Store at ≤-70°C, stable for 3 months under sterile conditions after opening. Please minimize freeze-thaw cycles.
Reconstitution	Always centrifuge tubes before opening. Do not mix by vortex or pipetting. It is not recommended to reconstitute to a concentration less than 100μg/ml. Dissolve the lyophilized protein in distilled water. Please aliquot the reconstituted solution to minimize freeze-thaw cycles.

SDS-PAGE image



Background

Product Name: Recombinant Human XCL1 (C-Fc-6His)
Catalog #: PHH1834



Alternative Names

Lymphotactin; ATAC; C motif chemokine 1; Cytokine SCM-1; Lymphotaxin; SCM-1-alpha; Small-inducible cytokine C1; XC chemokine ligand 1; LTN; SCYC1 and XCL1

Background

Lymphotactin is a secreted protein which belongs to the intercrine gamma family. It is also a member of the XC chemokine family. XCL1 is found in spleen with highest level, lower in peripheral leukocytes and very low levels in lung, colon and small intestine. XCL1 plays a role in inflammatory and immunological responses, inducing leukocyte migration and activation. XCL1 induces chemotactic function by binding to a chemokine receptor called XCR1. XCL1 is closely related to another chemokine called XCL2.

Note

For Research Use Only , Not for Diagnostic Use.