

Product Name: Recombinant Human TREML2 (C-Fc)
Catalog #: PHH1721

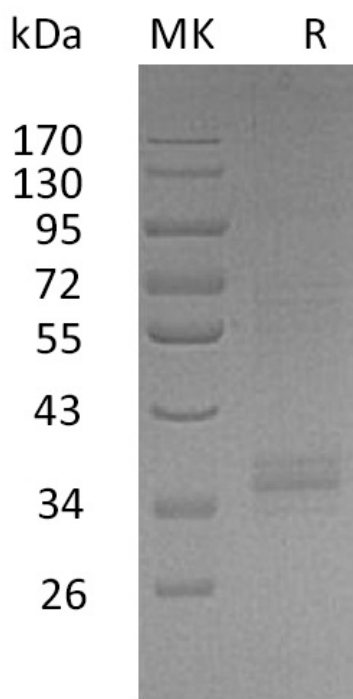


Summary

Name	TREML2/TLT-2/Trem-like transcript 2 protein
Purity	Greater than 95% as determined by reducing SDS-PAGE
Endotoxin level	<1 EU/μg as determined by LAL test.
Construction	Recombinant Human Triggering Receptor Expressed on Myeloid Cells-like Protein 2 is produced by our Mammalian expression system and the target gene encoding Gly19-Ser268 is expressed with a human IgG1 Fc tag at the C-terminus.
Accession #	AAI25079.1
Host	Human Cells
Species	Human
Predicted Molecular Mass	54.2 KDa
Formulation	Lyophilized from a 0.2 μm filtered solution of PBS, pH 7.4.
Shipping	The product is shipped at ambient temperature. Upon receipt, store it immediately at the temperature listed below.
Stability&Storage	Lyophilized protein should be stored at ≤ -20°C, stable for one year after receipt. Reconstituted protein solution can be stored at 2-8°C for 2-7 days. Aliquots of reconstituted samples are stable at ≤ -20°C for 3 months.
Reconstitution	Always centrifuge tubes before opening. Do not mix by vortex or pipetting. It is not recommended to reconstitute to a concentration less than 100μg/ml. Dissolve the lyophilized protein in distilled water. Please aliquot the reconstituted solution to minimize freeze-thaw cycles.

SDS-PAGE image

Product Name: Recombinant Human TREML2 (C-Fc)
Catalog #: PHH1721



Alternative Names

Trem-like transcript 2 protein; TLT2; Triggering receptor expressed on myeloid cells-like protein 2; TLT2; C6orf76

Background

Trem-like transcript 2 protein (TLT2), also known as Triggering receptor expressed on myeloid cells-like protein 2, TLT2 and C6orf76, is single-pass type I membrane protein. TREML2 contains one Ig-like V-type domain, which can be induced in CD4 T-cell by concanavalin-A. As a cell surface receptor, TREML2 may play a role in the innate and adaptive immune response. TREML2 also acts as a counter-receptor for CD276 and interaction with CD276 on T-cells enhances T-cell activation. It has shown that TREML2 may be involved in the innate immune response based on its expression profile and the fact that it is up-regulated in response to inflammation.

Note

For Research Use Only , Not for Diagnostic Use.