

**Product Name: Recombinant Human TALDO1 (C-6His)**  
**Catalog #: PHH1706**



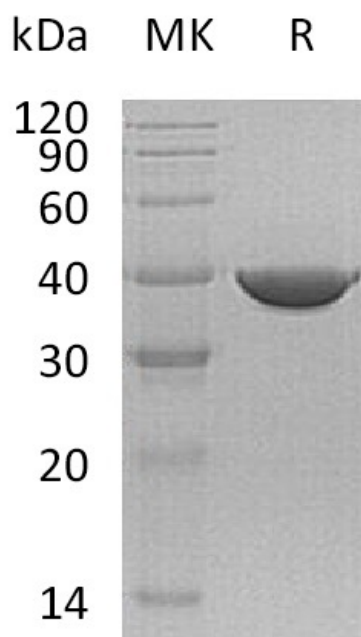
---

## Summary

<b>Name</b>	Transaldolase/TALDO1
<b>Purity</b>	Greater than 95% as determined by reducing SDS-PAGE
<b>Endotoxin level</b>	<1 EU/μg as determined by LAL test.
<b>Construction</b>	Recombinant Human Transaldolase is produced by our Mammalian expression system and the target gene encoding Met1-Lys337 is expressed with a 6His tag at the C-terminus.
<b>Accession #</b>	P37837
<b>Host</b>	Human Cells
<b>Species</b>	Human
<b>Predicted Molecular Mass</b>	38.6 KDa
<b>Formulation</b>	Supplied as a 0.2 μm filtered solution of 20mM Tris-HCl, 10% Glycerol, pH 8.0.
<b>Shipping</b>	The product is shipped on dry ice/polar packs. Upon receipt, store it immediately at the temperature listed below.
<b>Stability&amp;Storage</b>	Store at ≤-70°C, stable for 6 months after receipt. Store at ≤-70°C, stable for 3 months under sterile conditions after opening. Please minimize freeze-thaw cycles.
<b>Reconstitution</b>	

## SDS-PAGE image

**Product Name: Recombinant Human TALDO1 (C-6His)**  
**Catalog #: PHH1706**



### **Alternative Names**

Transaldolase; TALDO1; TAL; TALDO; TALDOR

### **Background**

Transaldolase (TALDO1) belongs to the transaldolase family of Type 1 subfamily. TALDO1 is expressed selectively in oligodendrocytes of the brain. TALDO1 is a key enzyme of the nonoxidative pentose phosphate pathway providing ribose-5-phosphate for nucleic acid synthesis and NADPH for lipid biosynthesis. This pathway can also maintain glutathione at a reduced state and thus protect sulfhydryl groups and cellular integrity from oxygen radicals. TALDO1 deficiency results in telangiectases of the skin, hepatosplenomegaly and enlarged clitoris.

### **Note**

For Research Use Only , Not for Diagnostic Use.