

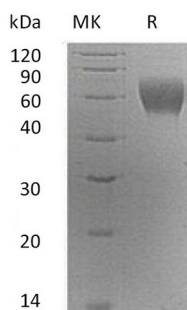
**Product Name: Recombinant Human Serpin A6 (C-6His)**  
**Catalog #: PHH1501**



## Summary

<b>Name</b>	Serpin A6
<b>Purity</b>	Greater than 95% as determined by reducing SDS-PAGE
<b>Endotoxin level</b>	<1 EU/μg as determined by LAL test.
<b>Construction</b>	Recombinant Human Serine Protease Inhibitor-clade A6 is produced by our Mammalian expression system and the target gene encoding Met23-Val405 is expressed with a 6His tag at the C-terminus.
<b>Accession #</b>	AAH58021.1
<b>Host</b>	Human Cells
<b>Species</b>	Human
<b>Predicted Molecular Mass</b>	43.67 KDa
<b>Formulation</b>	Lyophilized from a 0.2 μm filtered solution of 20mM PB, 150mM NaCl, pH 7.4.
<b>Shipping</b>	The product is shipped at ambient temperature. Upon receipt, store it immediately at the temperature listed below.
<b>Stability&amp;Storage</b>	Store at ≤-70°C, stable for 6 months after receipt. Store at ≤-70°C, stable for 3 months under sterile conditions after opening. Please minimize freeze-thaw cycles.
<b>Reconstitution</b>	Always centrifuge tubes before opening. Do not mix by vortex or pipetting. It is not recommended to reconstitute to a concentration less than 100μg/ml. Dissolve the lyophilized protein in distilled water. Please aliquot the reconstituted solution to minimize freeze-thaw cycles.

## SDS-PAGE image



## Background

**Product Name: Recombinant Human Serpin A6 (C-6His)**  
**Catalog #: PHH1501**

---



**Alternative Names**

Corticosteroid-Binding Globulin; CBG; Serpin A6; Transcortin; SERPINA6; CBG

**Background**

Serpin Peptidase Inhibitor, Clade A, Member 6 (SerpinA6) belongs to the Serine Protease Inhibitors superfamily. SerpinA6 is synthesized in liver and has also been identified in a number of glucocorticoid responsive cells. SerpinA6 has an alpha-globulin protein with corticosteroid-binding properties. It is the major transport protein for glucocorticoids and progestins in the blood of most vertebrates. Defects in SERPINA6 are a cause of corticosteroid-binding globulin deficiency which is an extremely rare hereditary disorder characterized by reduced corticosteroid-binding capacity with normal or low plasma corticosteroid-binding globulin concentration, and normal or low basal cortisol levels associated with hypo/hypertension and muscle fatigue.

**Note**

For Research Use Only , Not for Diagnostic Use.