

**Product Name: Recombinant Human SEMA4G (C-6His)**  
**Catalog #: PHH1487**

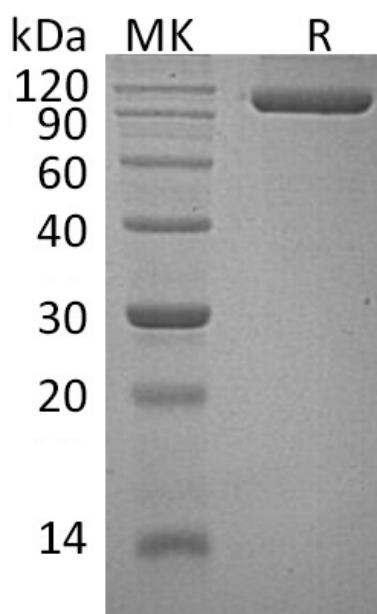


## Summary

<b>Name</b>	Semaphorin 4G/KIAA1619/SEMA4G
<b>Purity</b>	Greater than 95% as determined by reducing SDS-PAGE
<b>Endotoxin level</b>	<1 EU/μg as determined by LAL test.
<b>Construction</b>	Recombinant Human Semaphorin 4G is produced by our Mammalian expression system and the target gene encoding Val18-Leu680 is expressed with a 6His tag at the C-terminus.
<b>Accession #</b>	Q9NTN9-2
<b>Host</b>	Human Cells
<b>Species</b>	Human
<b>Predicted Molecular Mass</b>	74 KDa
<b>Formulation</b>	Lyophilized from a 0.2 μm filtered solution of PBS, pH 7.4.
<b>Shipping</b>	The product is shipped at ambient temperature. Upon receipt, store it immediately at the temperature listed below.
<b>Stability&amp;Storage</b>	Store at ≤-70°C, stable for 6 months after receipt. Store at ≤-70°C, stable for 3 months under sterile conditions after opening. Please minimize freeze-thaw cycles.
<b>Reconstitution</b>	Always centrifuge tubes before opening. Do not mix by vortex or pipetting. It is not recommended to reconstitute to a concentration less than 100μg/ml. Dissolve the lyophilized protein in distilled water. Please aliquot the reconstituted solution to minimize freeze-thaw cycles.

## SDS-PAGE image

**Product Name: Recombinant Human SEMA4G (C-6His)**  
**Catalog #: PHH1487**



### Alternative Names

Semaphorin-4G; KIAA1619; SEMA4G

### Background

Semaphorin-4G belongs to the semaphorin family, contains 1 Ig-like C2-type domain, 1 PSI domain, 1 Sema domain. Semaphorins are a large family of conserved secreted and membrane associated proteins which possess a semaphorin (Sema) domain and a PSI domain (found in plexins, semaphorins and integrins) in the N-terminal extracellular portion. Based on sequence and structural similarities, semaphorins are put into eight classes: invertebrates contain classes 1 and 2, viruses have class V, and vertebrates contain classes 3-7. Semaphorins serve as axon guidance ligands via multimeric receptor complexes, some (if not all) containing plexin proteins. This gene encodes a class 4 semaphorin.

### Note

For Research Use Only , Not for Diagnostic Use.