

**Product Name: Recombinant Human SHPK (C-6His)**  
**Catalog #: PHH1478**

---

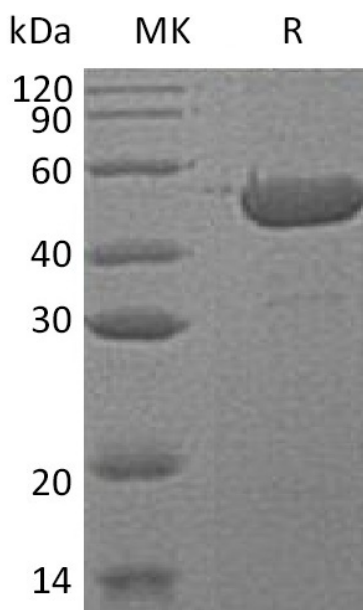


## Summary

<b>Name</b>	Sedoheptulokinase/SHPK/CARKL
<b>Purity</b>	Greater than 95% as determined by reducing SDS-PAGE
<b>Endotoxin level</b>	<1 EU/μg as determined by LAL test.
<b>Construction</b>	Recombinant Human Sedoheptulokinase is produced by our Mammalian expression system and the target gene encoding Met1-Ser478 is expressed with a 6His tag at the C-terminus.
<b>Accession #</b>	AAH20543.1
<b>Host</b>	Human Cells
<b>Species</b>	Human
<b>Predicted Molecular Mass</b>	52.5 KDa
<b>Formulation</b>	Supplied as a 0.2 μm filtered solution of 20mM Tris-HCl, 500mM NaCl, 10% Glycerol, 3mM DTT, pH7.4.
<b>Shipping</b>	The product is shipped on dry ice/polar packs. Upon receipt, store it immediately at the temperature listed below.
<b>Stability&amp;Storage</b>	Store at ≤-70°C, stable for 6 months after receipt. Store at ≤-70°C, stable for 3 months under sterile conditions after opening. Please minimize freeze-thaw cycles.
<b>Reconstitution</b>	

## SDS-PAGE image

**Product Name: Recombinant Human SHPK (C-6His)**  
**Catalog #: PHH1478**



### Alternative Names

Sedoheptulokinase; SHK; Carbohydrate kinase-like protein; SHPK; CARKL

### Background

Sedoheptulokinase (SHPK) belongs to the FGGY kinase family, and is mainly located in cytoplasm. SHPK is strongly expressed in liver, kidney and pancreas. It is expressed at lower levels in placenta and heart, and very weakly expressed in lung and brain. SHPK catalyzes the chemical reaction:  $\text{ATP} + \text{sedoheptulose} = \text{ADP} + \text{sedoheptulose 7-phosphate}$ . It can transform sedoheptulose to sedoheptulose 7-phosphate in the condition of ATP, and acts as a modulator of macrophage activation through control of glucose metabolism. In addition, It also can be down-regulated by LPS.

### Note

For Research Use Only , Not for Diagnostic Use.