

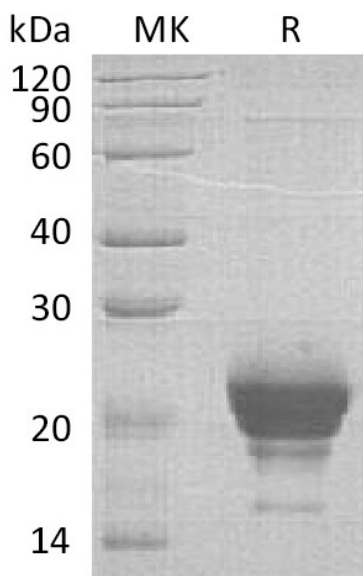
**Product Name: Recombinant Human RNASE 6 (C-6His)**  
**Catalog #: PHH1443**



## Summary

<b>Name</b>	Rnase 6
<b>Purity</b>	Greater than 95% as determined by reducing SDS-PAGE
<b>Endotoxin level</b>	<1 EU/μg as determined by LAL test.
<b>Construction</b>	Recombinant Human Ribonuclease K6 is produced by our Mammalian expression system and the target gene encoding Trp24-Leu150 is expressed with a 6His tag at the C-terminus.
<b>Accession #</b>	Q93091
<b>Host</b>	Human Cells
<b>Species</b>	Human
<b>Predicted Molecular Mass</b>	15.69 KDa
<b>Formulation</b>	Supplied as a 0.2 μm filtered solution of 20mM Tris-HCl, 150mM NaCl, 1mM DTT, 10% Glycerol, pH 7.5.
<b>Shipping</b>	The product is shipped on dry ice/polar packs. Upon receipt, store it immediately at the temperature listed below.
<b>Stability&amp;Storage</b>	Store at ≤-70°C, stable for 6 months after receipt. Store at ≤-70°C, stable for 3 months under sterile conditions after opening. Please minimize freeze-thaw cycles.
<b>Reconstitution</b>	

## SDS-PAGE image



**Product Name: Recombinant Human RNASE 6 (C-6His)**  
**Catalog #: PHH1443**

---



### **Alternative Names**

Ribonuclease K6; RNase K6; RNASE6; RNS6

### **Background**

Ribonuclease K6 (RNASE6) is a secreted protein that belongs to the pancreatic ribonuclease family. Human RNASE6 is synthesized as a 150 amino acid precursor that contains a 23 amino acid signal sequence, and a 127 amino acid mature chain. RNASE6 is expressed in many tissues, with high expression levels in the lung, with lower expression levels in the heart, placenta, kidney, pancreas, liver, brain, and skeletal muscle. It is also detected in monocytes and neutrophils. RNASE6 may have a role in host defense.

### **Note**

For Research Use Only , Not for Diagnostic Use.