

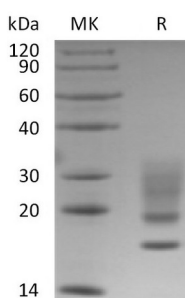
Product Name: Recombinant Human RNASE 1 (C-6His)
Catalog #: PHH1441



Summary

Name	Rnase 1
Purity	Greater than 95% as determined by reducing SDS-PAGE
Endotoxin level	<1 EU/μg as determined by LAL test.
Construction	Recombinant Human Ribonuclease Pancreatic is produced by our Mammalian expression system and the target gene encoding Lys29-Thr156 is expressed with a 6His tag at the C-terminus.
Accession #	P07998
Host	Human Cells
Species	Human
Predicted Molecular Mass	15.6 KDa
Formulation	Supplied as a 0.2 μm filtered solution of 20mM PB, 150mM NaCl, 10% Glycerol, pH 7.4.
Shipping	The product is shipped on dry ice/polar packs. Upon receipt, store it immediately at the temperature listed below.
Stability&Storage	Store at ≤-70°C, stable for 6 months after receipt. Store at ≤-70°C, stable for 3 months under sterile conditions after opening. Please minimize freeze-thaw cycles.
Reconstitution	

SDS-PAGE image



Background

Alternative Names	Ribonuclease Pancreatic; HP-Rnase; RIB-1; RNase Upl-1; Ribonuclease 1; RNase 1; Ribonuclease A; RNase A; RNASE1; RIB1; RNS1
Background	Ribonuclease Pancreatic is a secreted enzyme that belongs to the pancreatic ribonuclease family. RNASE1 is an endonuclease that cleaves internal phosphodiester RNA bonds on the 3-side of pyrimidine bases. RNASE1 prefers

Product Name: Recombinant Human RNASE 1 (C-6His)
Catalog #: PHH1441



poly(C) as a substrate and hydrolyzes 2,3-cyclic nucleotides, with a pH optimum near 8.0. RNASE1 acts on single stranded and double stranded RNA.

Note

For Research Use Only , Not for Diagnostic Use.