

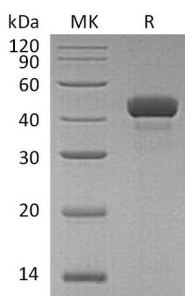
**Product Name: Recombinant Human RCN3 (C-6His)**  
**Catalog #: PHH1429**



## Summary

<b>Name</b>	Reticulocalbin-3/RCN3
<b>Purity</b>	Greater than 95% as determined by reducing SDS-PAGE
<b>Endotoxin level</b>	<1 EU/μg as determined by LAL test.
<b>Construction</b>	Recombinant Human Reticulocalbin-3 is produced by our Mammalian expression system and the target gene encoding Lys21-Leu328 is expressed with a 6His tag at the C-terminus.
<b>Accession #</b>	Q96D15
<b>Host</b>	Human Cells
<b>Species</b>	Human
<b>Predicted Molecular Mass</b>	36.2 KDa
<b>Formulation</b>	Supplied as a 0.2 μm filtered solution of 20mM Tris-HCl, 150mM NaCl, 1mM DTT, 10% Glycerol, pH 7.4.
<b>Shipping</b>	The product is shipped on dry ice/polar packs. Upon receipt, store it immediately at the temperature listed below.
<b>Stability&amp;Storage</b>	Store at ≤-70°C, stable for 6 months after receipt. Store at ≤-70°C, stable for 3 months under sterile conditions after opening. Please minimize freeze-thaw cycles.
<b>Reconstitution</b>	

## SDS-PAGE image



## Background

<b>Alternative Names</b>	Reticulocalbin-3; EF-Hand Calcium-Binding Protein RLP49; RCN3
<b>Background</b>	Reticulocalbin-3 is a member of the CREC family that is involved in the secretory pathway. Members of the CREC family consist of a number of multiple EF-hand domains. Reticulocalbin-3 localizes to the endoplasmic reticulum lumen. The

**Product Name: Recombinant Human RCN3 (C-6His)**  
**Catalog #: PHH1429**

---



bioinformaticanalysis of Reticulocalbin-3 reveal that it is a putative  $\text{Ca}^{2+}$ -binding protein. In addition, it has been shown that autoactivation and secretion of PACE4 was increased upon co-expression with Reticulocalbin-3. The proPACE4-RCN-3 complex is plays an important role in the biosynthesis of PACE4.

### **Note**

For Research Use Only , Not for Diagnostic Use.