

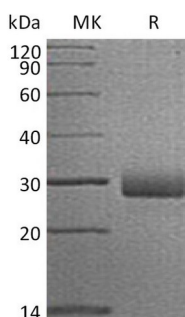
**Product Name: Recombinant Human RTBDN (C-6His)**  
**Catalog #: PHH1428**



## Summary

<b>Name</b>	Retbindin/RTBDN
<b>Purity</b>	Greater than 95% as determined by reducing SDS-PAGE
<b>Endotoxin level</b>	<1 EU/μg as determined by LAL test.
<b>Construction</b>	Recombinant Human Retbindin is produced by our Mammalian expression system and the target gene encoding Ser31-Pro229 is expressed with a 6His tag at the C-terminus.
<b>Accession #</b>	Q9BSG5
<b>Host</b>	Human Cells
<b>Species</b>	Human
<b>Predicted Molecular Mass</b>	22.3 KDa
<b>Formulation</b>	Lyophilized from a 0.2 μm filtered solution of 20mM PB, 150mM NaCl, pH 7.4.
<b>Shipping</b>	The product is shipped at ambient temperature. Upon receipt, store it immediately at the temperature listed below.
<b>Stability&amp;Storage</b>	Store at ≤-70°C, stable for 6 months after receipt. Store at ≤-70°C, stable for 3 months under sterile conditions after opening. Please minimize freeze-thaw cycles.
<b>Reconstitution</b>	Always centrifuge tubes before opening. Do not mix by vortex or pipetting. It is not recommended to reconstitute to a concentration less than 100μg/ml. Dissolve the lyophilized protein in distilled water. Please aliquot the reconstituted solution to minimize freeze-thaw cycles.

## SDS-PAGE image



## Background

**Product Name: Recombinant Human RTBDN (C-6His)**  
**Catalog #: PHH1428**

---



**Alternative Names**

Retbindin; RTBDN

**Background**

Human Retbindin is a 229 amino acid secreted protein that belongs to the folate receptor family. The gene that encodes retbindin exists as two alternatively spliced isoforms. Retbindin is first expressed in retina. It may play a role in binding retinoids and other carotenoids as it shares homology with riboflavin binding proteins. RTBDN gene was first identified in a study of human eye tissues.

**Note**

For Research Use Only , Not for Diagnostic Use.