

Product Name: Recombinant Human PTH1R (C-6His)
Catalog #: PHH1401

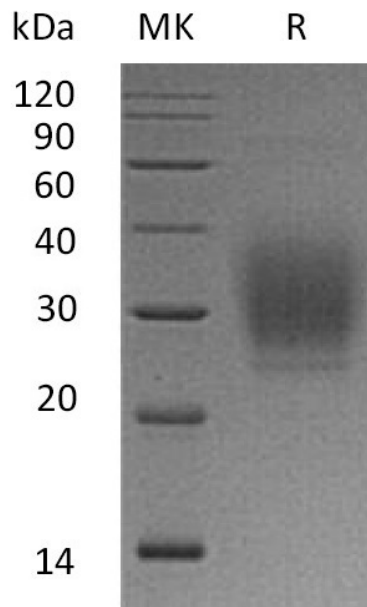


Summary

Name	PTH1R/PTHR1
Purity	Greater than 95% as determined by reducing SDS-PAGE
Endotoxin level	<1 EU/μg as determined by LAL test.
Construction	Recombinant Human Parathyroid Hormone 1 Receptor is produced by our Mammalian expression system and the target gene encoding Tyr23-Met189 is expressed with a 6His tag at the C-terminus.
Accession #	Q03431
Host	Human Cells
Species	Human
Predicted Molecular Mass	20.3 KDa
Formulation	Lyophilized from a 0.2 μm filtered solution of PBS, pH 7.4.
Shipping	The product is shipped at ambient temperature. Upon receipt, store it immediately at the temperature listed below.
Stability&Storage	Lyophilized protein should be stored at ≤ -20°C, stable for one year after receipt. Reconstituted protein solution can be stored at 2-8°C for 2-7 days. Aliquots of reconstituted samples are stable at ≤ -20°C for 3 months.
Reconstitution	Always centrifuge tubes before opening. Do not mix by vortex or pipetting. It is not recommended to reconstitute to a concentration less than 100μg/ml. Dissolve the lyophilized protein in distilled water. Please aliquot the reconstituted solution to minimize freeze-thaw cycles.

SDS-PAGE image

Product Name: Recombinant Human PTH1R (C-6His)
Catalog #: PHH1401



Alternative Names

Parathyroid hormone/parathyroid hormone-related peptide receptor;PTH/PTHrP type I receptor;PTH/PTHr receptor;Parathyroid hormone 1 receptor;PTH1 receptor;PTH1R

Background

Parathyroid hormone/parathyroid hormone-related peptide receptor also known as parathyroid hormone 1 receptor (PTH1R) is a protein that in humans is encoded by the PTH1R gene, Belongs to the G-protein coupled receptor 2 family.PTH1R functions as a receptor for parathyroid hormone (PTH) and for parathyroid hormone-related protein (PTHrP), also called parathyroid hormone-like hormone (PTHLH).

Note

For Research Use Only , Not for Diagnostic Use.